



# TAHITI



BEYOND



*Paradise*  
DISCOVERED

# Ia Orana

WELCOME TO  
THE ISLANDS OF TAHITI



Have you ever dreamed of a lush world of sun drenched landscapes that appear right before your eyes when you step off the plane? On *The Islands of Tahiti*, the air is full of alluring dreaminess. An explosion of colours dazzles your eyes as you scan verdant valleys, azure skies and turquoise lagoons. The multi-coloured *pāreu* (skirts) of the *vahine* (women) contrast with their hair, bathed in the raw tropical sunlight.

Tahiti, Moorea, Huahine, Raiatea, Taha'a, Bora Bora and Maupiti are high and mystical islands with deep valleys perfumed by the *tīare* (Tahitian flower), short-lived jewels that one wears over the ear. Rangiroa, Manihi, Fakarava, Tikehau - atolls at the end of the world, these "pearl islands" enclose in their jewellery-box lagoons the blue depths where Tahitian cultured pearls are cultivated. From the north to the south, from the fertile plains of the Austral Islands to the majestic spires of the Marquesas Islands, these fragrant paradises reveal the diversity and richness of Mother Nature. The beaches, forests and mountains of these faraway islands, whether laid with golden-hued sands or fringed with mysterious basalt monoliths, tell an ancient story that was a millennium in the making. *The Islands of Tahiti*, with its ancestral culture and the indivisible link between man and nature, is a refuge for those who seek a preserved and isolated destination. Focusing on quality over quantity, let yourself be seduced by an authentic experience discovering French Polynesia through its inhabitants and in harmony with nature.

Everything here whispers the legends of the mā'ohi people who discovered these verdant lands, where the 'uru (breadfruit), the fē'i (wild banana), and the taro thrive... these generous islands whisper to us, *Mānava!* Welcome!



**Icon Guide:** These icons shown throughout the brochure indicate that the resort offers:



Golf course, either 18 or 9 hole course



Kids Club or Child Friendly



Water sports and land sports, some at supplement



Fishing tours



Butler service



Bar and restaurants



Spa and wellness centres



WiFi included in your room or common areas



Adults only or no kids under 12 years.

## Contents

### Society Islands 6

Tahiti	7
Hilton Tahiti Resort	8
InterContinental Tahiti Resort & Spa	9
Le Tahiti by Pearl Resorts	10
Te Moana Tahiti Resort	11
Tahiti Nui Hotel	12
Vanira Lodge	13
Pension de la Plage	13
Le Relais Fenua	13
<b>Mo'orea 14</b>	
Hilton Moorea Lagoon Resort & Spa	16
Sofitel Kia Ora Moorea Beach Resort	17
Manava Moorea Beach Resort & Spa	18
Hotel Les Tipaniers	19
Hotel Hibiscus	19
Hotel Kavaka	20
Green Lodge	20
Moorea Beach Lodge	21
<b>Bora Bora 22</b>	
St Regis Bora Bora Resort	24
Conrad Bora Bora Nui	25
Four Seasons Resort Bora Bora	26
InterContinental Bora Bora Resort & Thalasso Spa	27
Le Bora Bora by Pearl Resorts	28
InterContinental Bora Bora Le Moana Resort	29
Royal Bora Bora	30
Maitai Polynesia	30
Village Temanuata Beach	31
Oa Oa lodge	31
<b>Taha'a &amp; Raiatea 32</b>	
Le Taha'a by Pearl Resorts	34
Vahine Island	35

Raiatea Lodge	36
Opoa Beach Hotel	37
<b>Huahine 38</b>	
Maitai Lapita Village	39
Le Mahana	39
<b>Tetiaroa 40</b>	
The Brando	41
<b>Tuamotu Islands 44</b>	
<b>Rangiroa 46</b>	
Kia Ora Resort & Spa	46
Le Maitai Rangiroa	47
<b>Tikehau 48</b>	
Le Tikehau by Pearl Resorts	48
<b>Fakarava 49</b>	
Havaiki Lodge	49
<b>Marquesas Islands 50</b>	
<b>Hiva Oa 51</b>	
Hiva Oa Hanakee Lodge	51
<b>Nuku Hiva 51</b>	
Le Nuku Hiva by Pearl Resorts	51



### Book with Confidence...

Paradise Discovered is a specialist division of **The Impulse Travel Group** – an Australian owned company with over 30 years of knowledge and experience in the destinations we represent. Our company is a member of AFTA, CATO and also ATAS accredited giving you peace of mind that you are booking with a financially secure and professional travel company.

**Stephanie Savage, Managing Director**



### Travel Tips

French Polynesia is also known as The Islands of Tahiti. There are 118 islands comprising French Polynesia, of which Tahiti is the main island and the location of the capital city of Papeete. Faa'a International Airport is located on the island of Tahiti approximately 5 kilometres west of Papeete. Air Tahiti Nui is the international airline to The Islands of Tahiti. It offers direct flights between Auckland and Papeete. Air New Zealand also offers direct flights from Auckland to Papeete. International flights arrive on the island of Tahiti. Due to crossing the International Dateline, most flights from Auckland arrive the day before they depart. Holiday packages in French Polynesia will usually require one night in Papeete before travelling to another island the following morning. Most passengers returning to New Zealand will require one night in Papeete prior to departure, as flights leave early in the morning. Air Tahiti is a private, domestic airline which links all five archipelagos. Travel between some islands, such as Tahiti to Moorea, can be made by high-speed ferry. We recommend booking the same hotel chain throughout your visit, as 'Island Combo' specials are often available. We also recommend booking transfers throughout your visit as many resorts are located on islets within the lagoon, only accessible by boat.

### Passports & Visas

Australian passport holders do not currently require a visa for a stay as a tourist of up to three months but must hold a passport with six months validity beyond the date of departure from French Polynesia. If you are a non-Australian passport holder please check your visa requirements with the appropriate Embassy or Consular office.

### Currency

The local currency is the French Pacific Franc (XPF). There are plenty of ATMs and banks in Tahiti however access can be difficult in the outer islands. Major credit cards are accepted in most hotels, restaurants, boutiques and other tourist establishments. We do recommend you carry some local currency for smaller purchases.

### Seasonality

While seasons may vary for each resort the following seasons apply:

High Season: April - October & December - January

Low Season: Rest of the year

Seasonal surcharges, supplements, compulsory meals and/or transfers may apply during high season or at particular properties. For all hotels on The Islands of Tahiti a compulsory local tax of approximately 150-200XPF per person per night must be paid directly to the hotels.

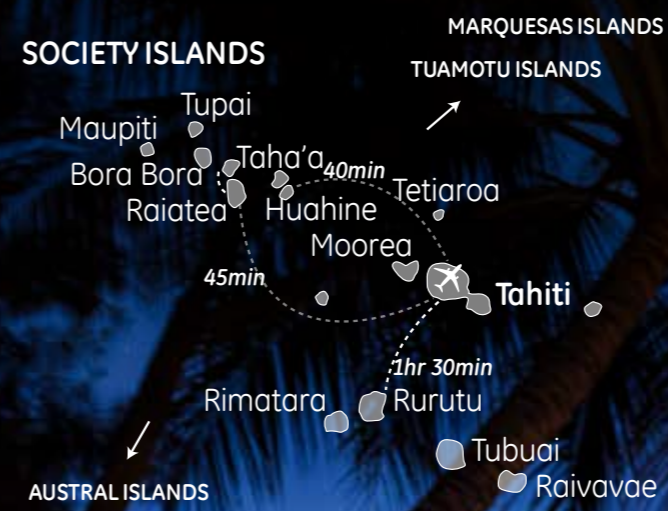
### Climate

The Islands of Tahiti enjoy an even climate year-round with daytime temperatures around 28-30°C, dropping slightly in the evening. The weather is warmer and more humid from November through to May and drier and cooler from June until October. Year round, the sun rises between 5 and 6am and sets between 5.30 and 7pm. There is very little difference between high and low tide in Tahiti. Tahiti is a true Honeymoon destination & many hotels offer free gifts to Honeymooners. Look for this red heart throughout the brochure to identify the resorts offering gifts. Honeymoon gifts range from a bottle of champagne on arrival, to sarongs and t-shirts, massages and romantic dinners. Contact us for a full list of gifts on offer at the resorts. Not all Honeymoon gifts can be combined with resort specials so our Tahiti Specialist will guide you. Many resorts throughout French Polynesia offer discounts depending on your length of stay. These range from free nights to free room upgrades, free meals, combined island room discounts and long stay room discounts. Look for this blue bonus logo throughout the brochure to identify the resorts where bonus deals are on offer. Contact us for the latest deals available at your preferred resorts.

# The Islands of Tahiti



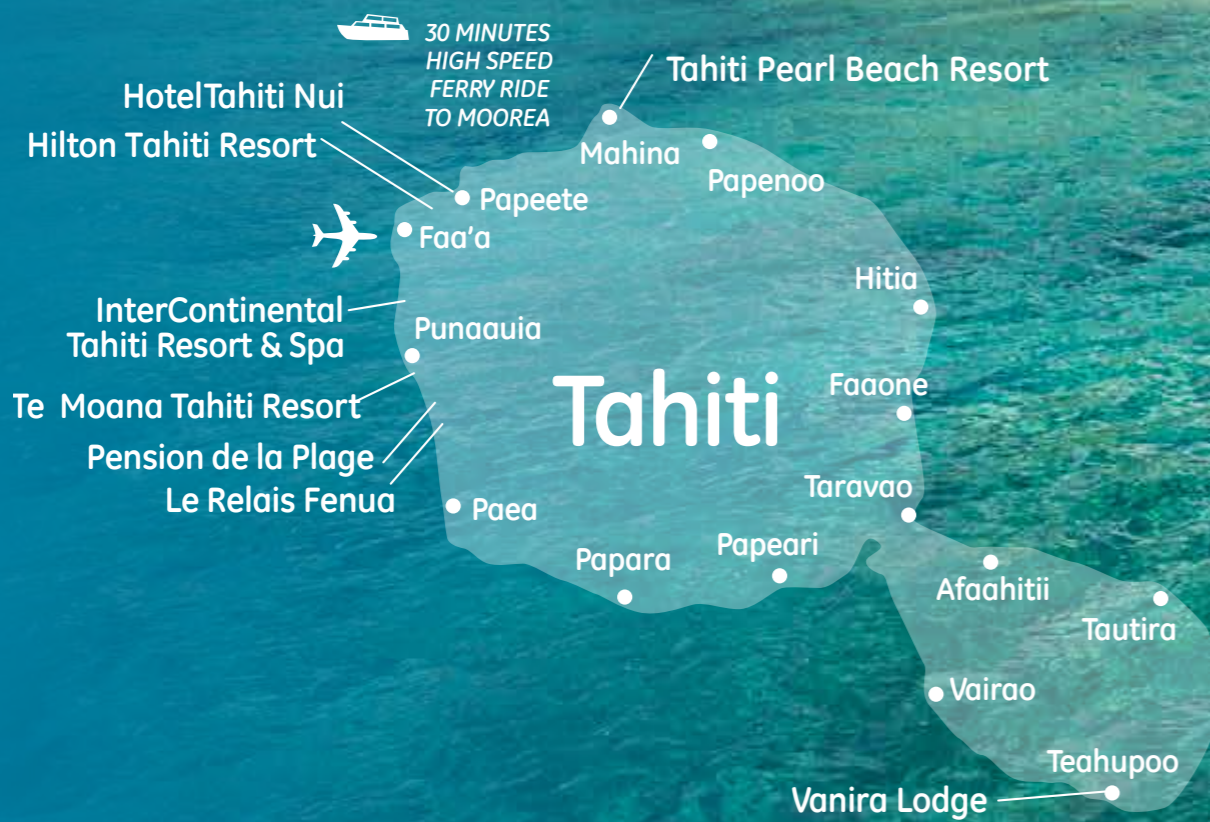
# Society Islands



**Tahiti, Moorea, Bora Bora...** These names sound like an invitation to a dream. Discovering them will enchant the most discerning traveller... This archipelago is also home to other islands not as famous but nonetheless as mesmerizing such as **Tetiaroa**, movie star Marlon Brando's mythical atoll, but also **Huahine, Raiatea, Taha'a and Maupiti**. Here and there, mountains proudly overlook bright blue lagoons, surrounded by motu (tiny islets), small coral crowns offering a lush green vegetation in their centre and white sandy beaches flirting with the ocean. The depths of the crystal blue water reveal even more treasures. Every island of the Society Islands unveils a legacy, a living culture ever evolving, authentic encounters and an invaluable art of living in harmony within an unspoiled environment. Pure natural luxury, at all times...



# Tahiti



## WHAT TO DO IN TAHITI

After a swim in the refreshing "big ocean", you will enjoy the delightful warmth of black sand while lying in the sun on the beach of Matavai, Mahina or Popoti close to the Taharu'u river in Papara.

Enter the centre of the island for a hike, take an exhilarating ride on an e-bike, or go on a 4x4 ride across the lush Papeno'o Valley which hides mysterious marae (sacred temple sites) along streams and rivers, waterfalls and water slides, deep natural pools; so many options for sports and activities to enjoy.

## Tahiti highlights...



EXPLORE BLACK SAND BEACHES



HIKE PAPENO'O VALLEY



BUY A BLACK PEARL



GO OFF-ROAD IN A 4X4



ENJOY THE COAST OF TEAHUPOO



FIND THE 'BIG WAVE'



## Hilton Tahiti Resort



The elegant oceanfront property is a culinary and wellness haven where elements of ancient Polynesian culture are intertwined with modern-day luxuries. From the moment guests step into the grand, semi-open-air lobby that offers stunning views of neighboring island Moorea to their first traditional Polynesian massage in the property's spa, Hilton Hotel Tahiti is a treat for the senses.

The property has three on-site restaurants that offer an elevated take on Southeast Asian cuisine and traditional Tahitian fare prepared with the freshest local ingredients. And trust us, once you taste the traditional *Poisson Cru* here, a version of Hawaiian poke prepared with coconut milk, lime juice, and freshly caught tuna, your culinary standards will never be the same.

But the crown jewel of the property is the pool, which is the largest on the island. It features a swim-up bar and six poolside cabanas nestled among fragrant Tahitian blooms and swaying palms. This is certainly the best place on the property to hide from the hot sun and enjoy a Mai Tai with a side of sweeping ocean vistas and stunning sunsets in the evenings.

neutral palette, inspired by the island's beautiful surroundings. If you're craving extra privacy, then opt for royal suite with an oversized balcony and panoramic views.

**Facilities:** Pool & Cabanas, Omiri Wellness Centre, Fitness Centre

### SPECIAL OFFERS

Day Use Rooms, Early Bird Offer, Long Stay Offer Combo Offer

### ACCESS

15 minute car/coach transfer from airport.

**From \$280 per person per night twin share**



GET A QUOTE

The 200-room resort is tastefully decorated in a



Ocean view room



## InterContinental Tahiti Resort & Spa



InterContinental Tahiti Resort & Spa is located on 32 acres of lush tropical garden alongside an idyllic lagoon. This well-known resort in Tahiti offers fine dining at two restaurants, world-class dinner shows as well as vibrant tropical bars, each offering their own unique ambiance. Relax in the Lobby Bar with a premium drink, enjoy an intimate dinner at Le Lotus overwater restaurant, or kick up your heels with our signature cocktails at Tiki Bar.

Spread across lush tropical gardens and over the serene lagoon, the 246 well-appointed guest rooms and overwater bungalows are designed with a distinctive Polynesian touch. Bright, spacious havens, they're perfect for relaxation.

Guests can indulge in a host of activities, from diving amongst coral reefs to unwinding at the Deep Nature Spa. This 4-star resort and spa also boasts two superb infinity pools set amid colourful indigenous plants and towering palms.

The InterContinental Tahiti Resort & Spa is the quintessential island escape, with everything you need for a true French Polynesian getaway.

**Facilities:** Lagoonarium for snorkelling, activities desk, fitness centre, business centre, dive centre

**Free activities:** Badminton, kayaks, petanque, snorkelling equipment, tennis court, volleyball

### SPECIAL OFFERS

Day Use Rooms, Early Bird Offer, Long Stay Offer Combo Offer, Honeymoon Offer

### ACCESS

5 minute car/coach transfer from airport.

**From \$325 per person per night twin share**



GET A QUOTE

paradisediscovered.com.au



## Le Tahiti by Pearl Resorts



Relax and Unwind at this oceanfront resort in Tahiti. Make your escape to the tranquil Le Tahiti by Pearl Resorts, which offers outstanding comfort and spectacular waterfront views in the lush, tropical surroundings of the 900-metre-long Lafayette Beach. With its stunning oceanfront location on historic Matavai Bay, this destination resort offers easy access to a wealth of activities and attractions. Make your reservation at Le Tahiti by Pearl Resorts and indulge in warm island hospitality and unparalleled resort services.

Le Tahiti by Pearl Resorts has a unique location only ten minutes from downtown Papeete, facing a beautiful black volcanic sand beach of Lafayette and an amazing view of Matavai Bay. This hotel allows you to take advantage of everything that French Polynesia has to offer.

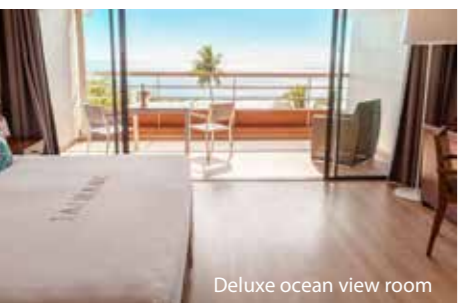
The hotel offers outstanding on-site amenities like an Activity Desk, an infinity swimming pool and even a local arts and crafts market. Indulge in some pampering with an afternoon or a full day of treatments at the on-site Le Spa, or visit the capital centre of Papeete using the resort's free shuttle service. You can also pick up last-minute souvenirs at the on-site gift shop.

- Facilities:** Tavai Spa, boutiques, business centre
- Free activities:** Fitness centre, Hammam, snorkelling equipment
- SPECIAL OFFERS**
  - Day Use Rooms
  - Early Bird Offer
  - Long Stay Offer
  - Combo Offer
  - Honeymoon Offer

**ACCESS**  
20 minute seat in coach or private car from airport.  
**From \$250 per person per night twin share**



GET A QUOTE



Deluxe ocean view room



## Te Moana Tahiti Resort



The Te Moana Tahiti Resort is a modern hotel that rests alongside the water and provides scenic views of Moorea across the lagoon. Located on the western coast, this hotel is only ten minutes from the airport. The rooms feature their own kitchenette and complimentary Wi-Fi, making this a popular choice for families and business travelers. With the largest infinity pool on the island, this is the ultimate place to unwind after your flight.

The Te Moana Tahiti Resort has 120 rooms, including standard rooms, studios, suites and apartments. The guestrooms strike a wonderful balance between contemporary design and authentic Polynesian influence, with modern furnishings and black and white cultural photography adorning the walls.

The resort also features a small boutique, spa, poolside bar and fitness centre. The hotel's trendy *Punavai Lounge Bar* offers live musical entertainment and fun signature cocktails, drawing in a mix of guests and local Tahitians, especially from Thursday to Saturday.

Relax by the infinity pool, enjoy a meal in one of the two restaurants and appreciate the sunset over the island of Moorea.

- Facilities:** Fitness centre, Hononui wellness centre, nautical and diving centre
- SPECIAL OFFERS**
  - Early Bird Offer
  - Long Stay Offer
  - Weekday Offer

**ACCESS**  
15 minute seat in coach or private car from airport.  
**From \$215 per person per night twin share**



GET A QUOTE



Standard room



## Tahiti Nui Hotel

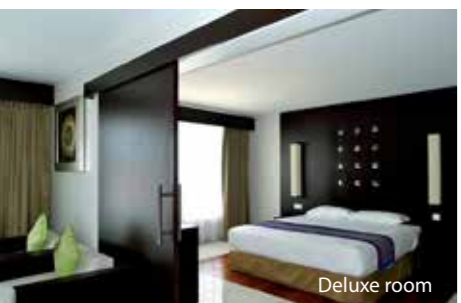
In the heart of downtown Papeete, right by shops and restaurants, Hotel Tahiti Nui offers 44 rooms and 47 most comfortable and modern suites. Hotel Tahiti Nui strives to you any service you may expect from an international hotel with competitive rates.

Nearby are the markets, shops, movie theatres and other Papeete downtown attractions. A few minutes walk from the shore front and the pier, this hotel is just the ideal stop between the islands. Enjoy the open-sky pool, relax at the fitness centre or treat yourself go to a delightful massage at the *Dhana Spa*.

In addition to a chic contemporary décor and exotic setting, the luxurious guestrooms of Hotel Tahiti Nui display a wealth of modern-day conveniences.

Facilities: Fitness centre, Dhana Spa

**ACCESS**  
10 minute seat in coach or private car from airport.  
From \$158 per person per night twin share



Deluxe room



GET A QUOTE



## Vanira Lodge

At the end of the world, about 2h00 from the airport, lies the village of Teahupo'o, made famous by its legendary wave which annually brings together the world's best surfers. Here nothing has changed ... this is the Polynesia of Yesterday and Today!

Cliffs, lush hills, forests, black sand beaches, caves, dolphins & whales in season ... The Vanira Lodge invites you to discover all these treasures in the comfort of its all-nature bungalows, real sculptures from natural materials, melted into the background ... A childhood dream!

GET A QUOTE



Located in the village of Teahupo'o, few minutes from the famous surf spot- Havae, and about 1h30 from the airport.

The Vanira Lodge being located in a remote area, far from the main shopping area and other attractions of the island, it is strongly recommended to rent a car during your stay. A car rental office is available in the area, open 6 days/week. Transfers between the Vanira Lodge and the car rental office provided.

**ACCESS**  
Seat in coach or private car from airport.  
From \$130 per person per night twin share



## Pension de la Plage

Vincent and Anne-Marie will welcome you to their little property, ideally located near a shopping centre, a bus stop, a car rental office, the Museum of Tahiti and her islands and above all in front of an access to a white sand beach - you just have to cross the main road. Swimming and snorkelling in the lagoon, farniente by the pool at the guest house and many other activities will fill your days. The rooms and studios are air-conditioned, spacious, comfortable and decorated in Polynesian style. You can choose to have dinner at the "table d'hôtes", cook in your studio or taste one of the of several "roulotte" - small typical ambulant restaurants within walking distance from the guest house.

GET A QUOTE



Pension de la Plage is an eco-friendly property: the guest house is equipped with solar water heaters and solar photovoltaic panels, the remaining fruits from breakfast are cooked to make jams, vegetable and food waste are turned into compost, bins are sorted for recycling, cleansing products used and soaps provided in rooms are biological... So many significant efforts to preserve our beautiful island!

**ACCESS**  
20 minute seat in coach or private car from airport.  
From \$107 per person per night twin share



## Le Relais Fenua

Located 5 minutes walk from one of the most beautiful white sand beaches of Tahiti, Relais Fenua offers you all the amenities of a hotel in a family and friendly atmosphere. In a beautiful tropical garden, the guesthouse has several bungalows distributed around a swimming pool. The service is attentive, the site quiet and close to a bus stop and small shops.

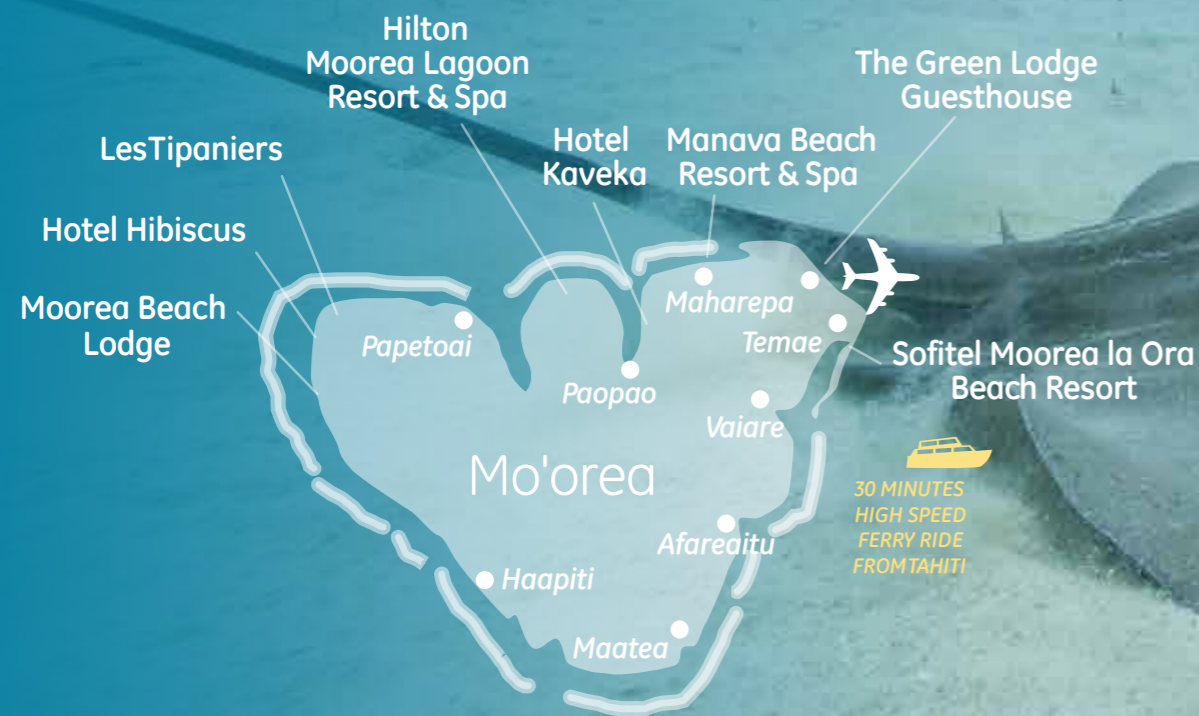
GET A QUOTE



**ACCESS**  
25 minute seat in coach or private car from airport.  
From \$92 per person per night twin share



# Mo'orea



## THE LAGOON OF MOOREA

A stones-throw from Papeete lies Tahiti's sister island Moorea. Pristine and secluded, Moorea unveils a bright range of shades of blue where rays happily come to greet swimmers. Located between the ocean and mountains, the 18-hole technical golf course of Tema'e offers amazing and scenic views of mountain ridges and the fringing reef. The bay of Paopao is nearly circled by a rocky fortress, pierced here and there as if giant warriors had tried to destroy it with their magical spears. At sunset, mountains look like they are set on fire inspiring many local painters, whose work is exhibited in the island's various art galleries.

Moorea is known as the activities island and offers a full range of water and land based experiences from horse riding to quad bike riding, from snorkelling to jet skiing, from massage to hiking... it is all on offer in Moorea!

## Mo'orea highlights...



SHARK & STING RAY FEEDING



PLAY GOLF LAGOON-SIDE



PLANTATIONS BY HORSEBACK



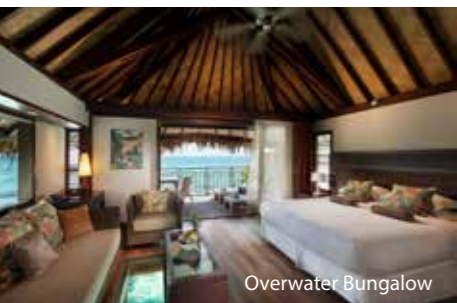
MOTU PICNIC



CYCLE AROUND THE ISLAND



AN ARRAY OF WATER SPORTS



## Hilton Moorea Lagoon Resort & Spa

Surrounded by the crystal-clear water of the Pacific Ocean, this eco-friendly hotel features over-water bungalows and the only over-water restaurant in Moorea. Our tour desk can help arrange tours and activities, from snorkelling with stingrays to 4x4 tours. A full-service spa, lagoon-style pool, tennis courts, and a fitness centre with yoga classes. The Hilton Moorea Lagoon Resort & Spa is centrally located on a sandy beach between Moorea's two iconic bays. This northern placement creates the perfect setting to admire both the sunrise to the east and the sunset to the west from the comfort of your own overwater bungalow.

Hilton Moorea Lagoon Resort and Spa offers a private beach where you can enjoy beach umbrellas, beachside drinks, and sun loungers, plus you'll have access to onsite snorkelling and kayaking.

Rotui Grill & Bar, one of 3 restaurants, serves regional cuisine and is open for lunch and dinner. Other highlights at this luxurious resort include 2 bars/lounges, a poolside bar, and a 24-hour fitness centre.

The spacious bungalows at the Hilton Moorea Resort are either scattered amidst exotic flower gardens or suspended over the tranquil lagoon. They feature a contemporary Polynesian design and offer all the comforts of a luxury hotel.

**Facilities:** Moorea Lagoon Spa, Polynesian activities, baby sitting, business centre, parking

**Free activities:** Fitness centre, Hammam, kayaks, pedal boat, paddle board, snorkelling equipment, sauna, tennis court

**Stay on land:** Garden Pool Bungalows, Deluxe Garden Pool Bungalows, Lagoon Bungalows, Garden Pool Suite

**Stay overwater:** Overwater Bungalows, Panoramic Overwater Bungalows, Premium Panoramic Overwater Bungalows

### SPECIAL OFFERS

Advance Purchase Rates, Early Bird, Long Stay Offer

**ACCESS:** 25 minutes from pier or 20 minutes from airport by car/bus.

**From \$513 per person per night twin share**



GET A QUOTE



## Sofitel Kia Ora Moorea Beach Resort

Sofitel Kia Ora Moorea sits on the edge of the crystal-clear lagoon framed by jagged green mountains. Accessible via a short ferry ride from Papeete. Located on a picturesque white sand beach and boasts spectacular views of the crystal lagoon and the iconic silhouette of Tahiti Island. The resort enjoys a secluded location on the picturesque white sand beach of Temae, the longest of the island, within a protected marine area.

Boasting French style infused with Tahitian hospitality, the hotel's two acclaimed restaurants provide an intimate and romantic setting with incredible panoramic views and live entertainment.

At K restaurant, guests can indulge in a striking fusion of local flavours and traditional French cuisine. Pure restaurant offers stunning views and a sumptuous seafood menu. The poolside bar, and beach bar offer an idyllic setting to enjoy a drink.

The elegant bungalows offer beachfront or garden views. The bungalow accommodation is made from natural materials and features a rain shower. Every unit has an LCD TV and Sofitel's exclusive MyBed and features a free minibar with a selection of beers, sodas and water.

Come live the French way and experience chic luxury with authentic South Pacific charm.

**Facilities:** Le Jardin Spa & Beauty, Polynesian activities, baby sitting, business centre, parking

**Free activities:** Parlour games, paddle board, snorkelling equipment, petanque

**Stay on land:** Garden Bungalows, Beach Bungalows, Lagoon Bungalows, Luxury Villa

**Stay overwater:** Superior Overwater & Luxury Overwater Bungalows

### SPECIAL OFFERS

Combo Offer, Early Bird, Long Stay Offer

**ACCESS:** 5 minutes by car/bus from pier and airport

**From \$420 per person per night twin share**



GET A QUOTE



 **Moorea**

## Manava Moorea Beach Resort & Spa

This traditional Polynesian style resort is a perfect blend of luxury and serenity for couples, honeymooners, divers and families. The Manava Beach Resort & Spa Moorea nestles on the island shore, just by the village of Maharepa is an ideal location, between the majestic Cook's Bay and the Moorea Green Pearl Golf Club.

This traditional and contemporary Polynesian style resort offers 90 rooms and bungalows, as well as one restaurant, two friendly bars, an infinity edge pool, an on-site spa, a meeting room, a boutique and an on-site diving centre. As part of Manava Beach Resort & Spa Moorea commitment for the protection of the environment, a coral nursery called To'a Nui has been installed. This park allows a colony of corals to regenerate in perfect ecological conditions.

Whichever accommodation you choose, you will have air-conditioned comfort (the bungalows also have ceiling fans), an outside terrace, mini-bar, hairdryer, safe, flat-screen television and Wi-Fi. Each bungalow has a sunny exterior terrace with comfortable loungers. Over-water bungalows offer direct access to the lagoon. The premium over-water bungalows are especially well situated, close to the coral reef ledge so you can immediately swim off and discover a fascinating world of coloured fish and exotic corals.

**Facilities:** Activity desk, Moorea Blue Diving Centre, Toanui coral nursery, Manea Spa

**Free activities:** Badminton, Hammam, kayaks, parlour games, petanque, paddle board, snorkelling equipment, volleyball

**Stay on land:** Garden & Garden Pool Bungalows, Beach Bungalows.

**Stay overwater:** Overwater Bungalows, Premium Overwater Bungalows

**SPECIAL OFFERS**  
Early Bird Offer, Long Stay Offer

**ACCESS:** 15 minutes from pier or 10 minutes from airport by car/bus

**From \$311 per person per night twin share**



[GET A QUOTE](#)



Overwater Bungalow



 **Moorea**

## Hotel Les Tipaniers

Les Tipaniers is a pleasant and basic property located along a white sand beach with safe, shallow water, perfect for families who are looking for quiet, non-resort style accommodation. It is conveniently located about 10mins on foot from local shops. It features two restaurants, with its lagoon front restaurant allowing you to enjoy stunning views during your meal.

The accommodations at the hotel include a selection of traditional bungalows, each with a private terrace overlooking the beach or the garden.

The rooms can accommodate up to four people, while the superior category can sleep six. Some include a

fully equipped kitchen, making this a great option for groups or families. The interiors are bright and airy with tropical fabrics and exotic woods. Free Wi-Fi and equipment such as outrigger canoes and bicycles are available for all hotel guests.

**Free activities:** Bicycles, library, petanque, volleyball

**Stay on land:** Garden Bungalows, Beach Bungalows

**ACCESS:** 40 minutes from pier/airport by car/bus

**From \$145 per person per night twin share**



[GET A QUOTE](#)



 **Moorea**

## Hotel Hibiscus

Located on the northwest corner of Moorea, Hotel Hibiscus is surrounded by a lush coconut grove and a beautiful white sand beach. Located in the heart of a friendly shopping area, it provides a nice budget friendly option with traditional island charm and the utmost seclusion.

The rooms and bungalows at the Hotel Hibiscus are located amidst a tropical garden alongside the lagoon. Each one features a kitchenette, making them ideal for families or couples seeking privacy and independence. The bungalows are the most spacious, and they offer

a covered outdoor porch with garden or ocean views. Other hotel amenities include a swimming pool, convenient beach access, and a restaurant and bar located on the shoreline.

**Stay on land:** Garden & Lagoon View Bungalows.

**ACCESS:** 35 minutes from pier and airport by car/bus.

**From \$147 per person per night twin share**



[GET A QUOTE](#)



Moorea

## Cook's Bay Hotel & Suites

Relaunched in 2023, the hotel presents 38 suites, including two family suites, spread across 5 wings. Each beautifully designed suite features a bedroom with ensuite bathroom, a lounge area, a kitchenette, and a spacious balcony.

Just a few steps away from these beachside abodes, relax and indulge on the hotel's private outdoor area. Surrounding a large mirror-like swimming pool, the well-appointed space spreads all the way down to a white-sand beach, where a pristine and shallow lagoon invites you to cool down throughout the day.

Travel deeper into relaxation with our selection of refreshments available at the hotel's pool bar,

including cocktails bursting sun-drenched local flavors. The hotel's restaurant & bar Le Cook's boasts a 180-degree view across the bay, offers the rare opportunity in Moorea to dine by the water.

Enjoy our entertainment facilities: a fitness centre or make your way to the gaming room where little-ones and grown-ups can have some fun anytime indoors.

**ACCESS:** A 7 minute flight from Papeete & and coach/car transfer to hotel or a 30 minute high speed ferry from Papeete & and coach/car transfer to hotel.

From \$339 per person per night twin share



GET A QUOTE



Moorea

## Moorea Beach Lodge

A little corner of paradise along a white sandy beach facing the turquoise lagoon surrounded by a tropical garden, the Moorea Beach Lodge is located on the West side of Moorea Island. Located along one of Moorea's most beautiful beaches and not far from a small shopping district.

The Zen et Chic Moorea Beach Lodge is built around a Fare Lounge of more than 200m<sup>2</sup>, with a comfortable living space which extends onto a covered terrace. You'll awake each morning to a home-cooked breakfast served in the main lodge in front of the lagoon and have access to a professional kitchen throughout your stay to cook your own meals or hire a personal chef.

The lodge provides all guests with free kayaks and bikes, and can arrange for scuba diving, snorkelling, and ray feeding.

**Activities:** Bicycles, kayaks

**Stay on land:** Garden Bungalows, Honeymoon Bungalows, Beach Bungalows.

**ACCESS:** 35 minutes from pier and airport by car/bus

From \$191 per person per night twin share



Pension



GET A QUOTE



Moorea

## Green Lodge

Set on the beach, as in a painting, the Green Lodge welcomes you and invites you to rest in the tranquillity of its upscale bungalows in a very neat setting. Wood and stone highlight the living spaces and the surrounding nature. Light and shadow intertwine and play in the volumes of your "fare". You will relax in an idyllic setting. This guest house is located on the edge of the reef, far from the road, near the golf course, along a wild beach reminiscent of the Tuamotus (swimming at 5min). Flowered and shaded garden, small swimming pool, billiards, bicycles, fishpond,

sunrises on Tahiti for the early risers... Rest assured in a friendly and quiet atmosphere.

**Activities:** Billiard, library, parlour games, snorkelling equipment

**Stay on land:** Rooms, Garden Bungalows, Beach Bungalows.

**ACCESS:** 15 minutes from pier and 10 minutes from airport by car/bus

From \$123 per person per night twin share



Pension



GET A QUOTE



Moorea Must-Do

## Why not visit a 'must do'

### MOOREA BEACH CAFÉ BY BRUNO JAMAIS

Moorea Beach Café is a café and restaurant overlooking one of Moorea's beautiful lagoons, creating the idyllic setting for a New Cuisine in a musical ambience.

Featuring Polynesian-Asian-French-fusion cuisine, this contemporary-chic beachfront eatery in Maharepa, owned by French-born restaurateur Bruno Jamais,

is a sunny spot where you can indulge in some upscale Papeete-meets-Paris dining—maybe paired with a glass of bubbly. Devotees adore dishes such as marinated tuna tartare with wasabi, avocado and fried shallots. A three-course lunch runs about \$60 per person (without beverages).

By Donna Heiderstadt

# Bora Bora

A jewel, a pearl. Fifty shades of turquoise with countless shimmering reflections on the water, the stuff of dreams. Words cannot express the essence of Bora Bora.

Bora Bora is a feast for the senses and conveys a special energy. To savour the ultimate made in Bora Bora experience, one must splurge on a room on stilts overlooking the lagoon on one of the mythical island's many motu. A meal, a dance show or a night of drunkenness in one of the island's luxurious hotels, it doesn't matter... Everything in Bora Bora is an invitation to experience the myth and its legendary beauty. Considered the most beautiful lagoon in the world, its vibrant blue seems to touch the sky. This is where paradise is lost and found again.



Bora Bora highlights...



DIVE WITH LEMON SHARKS



JET-SKI TOUR AROUND THE ISLAND



4WD TOUR OF THE MAIN ISLAND



SNORKEL THE CORAL GARDEN



BREAKFAST CANOED TO YOU



ISLAND TOUR BY ATV



## St Regis Bora Bora Resort

Stay in the largest overwater villas in the South Pacific, starting at 144m<sup>2</sup>, and revel in the turquoise blue waters visible from the glass panel floors.

Sail around the island's azure waters, or dive under to meet black tip reef sharks and rays up close. After your island adventure, swim in our Lagoonarium, workout in the fitness centre, or unwind with a spa treatment. Order a cocktail at the swim-up bar, or sample international and Polynesian-inspired cuisine at our four restaurants. Our resort offers an awe-inspiring backdrop for destination weddings, honeymoons and company retreats.

St. Regis Butler Service has been a treasured hallmark of the St. Regis experience for more than one hundred years. From a perfectly pressed suit ready for an important meeting, to a favourite book at hand for an evening read, to a thoughtful, last minute gift for a loved one, no request is too small or unattainable no matter what the hour of the day.

Make yourself at home in one of the 90 individually decorated guestrooms, featuring minibars and espresso makers. Rooms have private furnished balconies or patios. 42-inch LCD televisions and complimentary wireless Internet. Bathrooms with separate bathtubs and showers feature deep soaking bathtubs and rainfall showerheads.

**Activities:** Billiard, fitness centre, Hammam, kayaks, library, snorkelling equipment, sauna, tennis court, volleyball

**Stay on land**  
Garden Suites with Pool, Beach Front Suites with Pool.

**Stay overwater**  
Overwater Superior Suite Lagoon View, Overwater Deluxe Suite Island View, Overwater Deluxe Suite Otemanu View, Overwater Premier Suite with Whirlpool, 1 Bedroom Overwater Royal Villa with Pool, 2 Bedroom Overwater Royal Villa with Pool.

**SPECIAL OFFERS**  
Long Stay Offer, Stay/Pay Offer

**ACCESS:** 50 minute flight from Papeete and 20 minute speedboat to hotel from Bora Bora airport.

**From \$943 per person per night twin share**



GET A QUOTE



Overwater Premium Villa



## Conrad Bora Bora Nui

**Your tropical overwater hideaway**

The Conrad Bora Bora Nui boasts a luxurious award-winning resort. Nestled in a private cove on Motu To'opua, where villas float on turquoise seas and views of indigo horizons are as endless as the bright blue sky. Embrace Polynesian sophistication in hillside suites and overwater villas with breathtaking views. Discover a world of flavours in five unique restaurants and bars, including the fairy-tale setting of Iriatai, our signature French restaurant. Experience ultimate relaxation where energy in black lava rocks combines with the natural healing touch.

At Hina Spa, only the finest natural products by Biologique Recherche are used, with over 40 years of experience in developing the most powerful and effective skincare products in the beauty industry.

Enjoy an array of activities, from hiking to swimming with sharks. For a truly unique experience, spend a day at their private islet Motu Tapu, enjoy a picnic prepared by our chefs, sip on Champagne, and take in the serenity. Create memories of a lifetime against the backdrop of your dreams or plan a wedding celebration with heartfelt touches.

**Activities:** Bicycles, billiard, fitness centre, Hammam, kayaks, library, paddle board, snorkelling equipment,

sauna, tennis court

**Stay on land:**  
Lagoon View Suites, Garden Villas, Garden Pool Villas, Horizon Pool Villas

**Stay overwater:**  
Overwater Villas, Deluxe Overwater Villas, Overwater Pool Villas, Presidential Overwater Villas

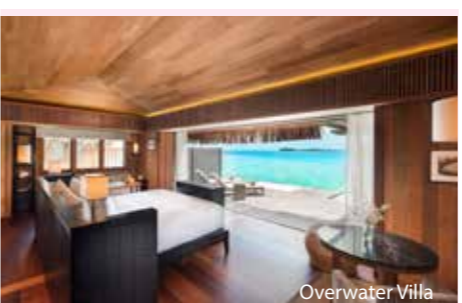
**SPECIAL OFFERS**  
Long Stay Offer

**ACCESS:** 50 minute flight from Papeete and 25 minute speedboat to hotel from Bora Bora airport.

**From \$772 per person per night twin share**



GET A QUOTE



Overwater Villa



## InterContinental Bora Bora Resort & Thalasso Spa

Amid the indelible aquamarine of Bora Bora's alluring lagoon you'll find Motu Piti Aau, meaning 'islet of two hearts,' and the lush InterContinental Bora Bora Resort & Thalasso Spa.

At InterContinental® Bora Bora Resort & Thalasso Spa hotel, you can step off the deck of your luxury over-water villa into the warm embrace of a tranquil lagoon. Enjoy everything from scuba diving to sunset cruises on the surrounding reefs, while a pristine beach and an award-winning spa invite you to relax. From weddings in the glass-bottomed chapel to candlelit dinners beneath swaying palm trees, it's the perfect setting to experience the romance of the South Pacific.

Take a plunge in the infinity pool at InterContinental Bora Bora Resort Thalasso Spa, or relax at the Deep Ocean Spa, with areas for hydrotherapy and beauty care. If you're feeling active, sports facilities include a fitness centre and a tennis court.

Culinary delights to stir the senses, from fine French dining to barbecue buffets and American breakfasts to fresh tropical fruits, a stay here is a culinary journey across continents.

**Activities:** badminton, billiard, fitness centre, kayaks, pedal boat, paddle board, snorkeling equipment, tennis court, volleyball

**Stay overwater:** Overwater Villas – Beach View, Lagoon View, Bora Bora Island View, Otemanu View, Pool Villas (Beach and Lagoon Views). One & Two Bedroom Overwater Teremoana Villas with Pool

### SPECIAL OFFERS

Early Bird Deals, Combo Deals, Stay/Pay Deals

**ACCESS:** 50 minute flight from Papeete and 20 minute speedboat to hotel from Bora Bora airport.

From \$1190 per person per night twin share



GET A QUOTE



Overwater Villa Lagoon View with Pool



## Four Seasons Resort Bora Bora

Newly enhanced overwater bungalow suites, beachfront villa estates and underwater adventures welcome you at this sand-fringed idyll in the shadow of Bora Bora's Mount Otemanu. Toast sunsets from your private plunge pool, marvel at the Tahitian night sky, or simply lose yourself in our lagoon, where the waters teem with exotic reef fish and colourful corals.

The Four Seasons Resort Bora Bora is a South Pacific paradise, combining the highest standards of service with ultramodern comforts and the natural ease and gracious hospitality of the Polynesian culture. Meandering channels of pure turquoise lead to the main beach or to smaller lagoons, waiting to be discovered. Every vista is breathtaking. The Resort offers 108 one and two-bedroom overwater bungalow suites and seven two and three-bedroom beachfront villa estates, all designed with thatched roofs and decorated with indigenous artwork.

Four restaurants offer a vast selection of creative culinary experiences, while the full-service spa is balanced by the powerful rhythms of the Pacific Ocean and the tranquillity of the island's lagoon - offering an unmatched combination of relaxation and exhilaration.

**Activities:** Beach volley, children playground, fitness centre, kayaks, library, paddle board, snorkelling equipment, tennis court

**Stay on land:**  
2 & 3 Bedroom Beach Front Villas

**Stay overwater:**  
One Bedroom Beach View Overwater Bungalow Suite, One Bedroom Lagoon View Overwater Bungalow Suite, One Bedroom Mountain View Overwater Bungalow Suite & Plunge Pool, One Bedroom Mountain View Overwater Bungalow Suite & Plunge Pool

### SPECIAL OFFERS

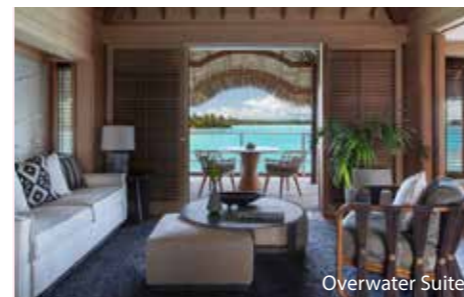
Advance Purchase Rates, Stay/Pay Offer

**ACCESS:** 50 minute flight from Papeete and 15 minute speedboat to hotel from Bora Bora airport.

From \$1,371 per person per night twin share



GET A QUOTE



Overwater Suite



## Le Bora Bora by Pearl Resorts

Poised on Motu Tevairoa, only a ten-minute boat ride from the airport and fifteen minutes across the lagoon from the village of Vaitape, Le Bora Bora combines heavenly location and proximity to the mainland. The resort boasts authentic Polynesian style and architecture and certainly offers some of the most traditionally designed rooms and villas in Bora Bora.

While overwater bungalows are Bora Bora's iconic accommodation type, the resort also features spacious Garden Villas with Pool and Beach Villas with Pool and magical views of iconic Mount Otemanu.

The 108 rooms and villas are nestled in a beautiful tropical garden, on the beach and of course above the turquoise lagoon.

There are three restaurants and two bars, and cuisine is international with a Polynesian twist.

At the TĀVAI Spa, the islands' generous nature has been captured to create decadent treatments that will rejuvenate and renew. Vichy shower body scrubs, hot stone massage with fragrant 'monoi' oil, or the local 'taurumi' massage, there is a lot to choose from and spa lovers will not be disappointed. As far as recreation, a variety of non-motorized water toys are available : stand up paddle boards, kayaks and outrigger canoes, snorkelling equipment. On land:

tennis court, ping pong, pétanque and a fully air-conditioned gym.

**Activities:** badminton, billiard, fitness centre, kayaks, pedal boat, paddle board, snorkelling equipment, tennis court, volleyball

**Stay on land:** Garden Villa & Pool, Beach Villa & Pool, Royal Beach Villa & Pool

**Stay overwater:** Overwater Bungalow, Lagoon Overwater Bungalow, Otemanu Overwater Bungalow, Pool Overwater Villa, End of Pontoon Overwater Suite & Pool

### SPECIAL OFFERS

Early Bird Deals, Combo Deals, Stay & Save Deals

**ACCESS:** 50 minute flight from Papeete and 10 minute speedboat to hotel from Bora Bora airport.

From \$624 per person per night



GET A QUOTE



Overwater Bungalow



## InterContinental Bora Bora Le Moana Resort

Discover an intimate, authentic escape in Bora Bora, a diamond in French Polynesia's paradisiacal archipelago. From our unique home on Matira Point, our family of staff offer romance seekers a genuine Polynesian welcome with warm, traditional touches, stunning overwater bungalows and bespoke experiences. Within gazing distance of Mounts Otemanu and Pahia, InterContinental Bora Bora Le Moana Resort delivers pure Polynesia.

Polynesian authenticity and luxury in Bora Bora at InterContinental® Bora Bora Le Moana Resort, the day starts with breakfast in your overwater bungalow, delivered on a wooden canoe decorated with exotic flowers. Spend the morning exploring world-class dive sites, jumping straight off your private pontoon into azure waters for a swim, or beachcombing along stunning Matira Beach. Elsewhere on the island, Mount Otemanu provides some vigorous hiking and stunning views, or just potter about the main village for famed Tahitian black pearls.

Guests may utilize the Deep Ocean Spa at InterContinental Bora Bora Resort & Thalasso Spa, our sister hotel. A boat shuttle is available for travel between the two resorts (supplement may apply).



Beach Bungalow Lagoon View

**Activities:** Billiard, kayaks, parlour games, paddle board, snorkelling equipment

**Stay on land:** Beach Bungalow Lagoon View

**Stay overwater:** Overwater Bungalows – Beach View, Otemanu Mountain View, Lagoon View, Ocean View, End of Pontoon

### SPECIAL OFFERS

Early Bird Deals, Combo Deals, Stay/Pay Deals

**ACCESS:** 50 minute flight from Papeete and 25 minute speedboat to hotel from Bora Bora airport.

From \$690 per person per night twin share



GET A QUOTE





 Bora Bora



## The Westin Bora Bora Resort & Spa

The Westin Bora Bora Resort & Spa sits at the base of Mount Otemanu, placing you in the midst of paradise.

After a complete property-wide renovation and rebrand, The Westin Bora Bora Resort & Spa is ready to unveil itself as the newest luxury destination in Bora Bora. Travelers looking to experience the best of Bora Bora will discover incredible overwater bungalow and villa accommodations, delectable culinary options, a variety of well being and spa offerings, as well as our beloved Ecological Center and Turtle Sanctuary all without leaving the resort.

Relax on white sand beaches or on the sunbed of your spacious villa. Peer over the ledge of the hotel infinity pool and spot the pontoons with floating bungalows. Our expansive lagoon allows divers and snorkelers to interact with local marine life.

Following a day of adventure recharge with a visit to our Spa and Wellness center and finish out the day with a sunset drink at the most spectacular bar following our diverse dining options.

**Stay on land:**  
Beach and Lagoon Bungalow, Beach and Lagoon Bungalow with private pool.

**Stay overwater:**  
Overwater Villa, Overwater Villa with plunge pool, 2 bedroom Overwater Villa, 2 bedroom Overwater Villa with plunge pool.

**ACCESS:** 50 minute flight from Papeete and speed-boat to hotel from Bora Bora airport.

**Opening soon, call us for the latest offers.**



[GET A QUOTE](#)



 Bora Bora

## Royal Bora Bora

The hotel built in a Polynesian style has a tropical garden on the mountain side where all the rooms are nestled. On the sea side, the restaurant, the beach bar and the dancing bar surround our swimming pool and offer direct access to our white sand beach and a magnificent view of the motu Pitii Uu'Uta.

At the end of the day, twice a week, the bar and restaurant host Polynesian music groups that will immerse you in a traditional atmosphere. You can learn about the local party.

The Royal Bora Bora offers 80 standard rooms. All rooms are air-conditioned and overlook the garden.

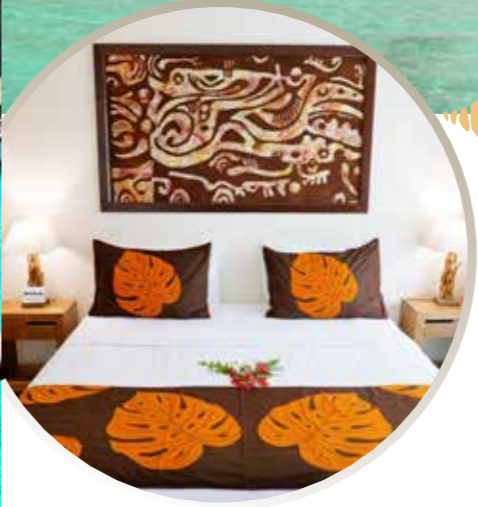
The rooms are equipped with a safe, a flat-screen TV, a minibar, a coffee and tea service and a terrace. The bedrooms are spacious enough and all bathrooms have showers.

**Stay on land:** Standard Room

**SPECIAL OFFERS** Early Bird, Combo and Long Stay Deals

**ACCESS:** 50 minute flight from Papeete to Bora Bora & 15 minute boat ride by free shuttle to Vaitape pier then 20 minute drive by the hotel minivan

**From \$166 per person per night twin share**



[GET A QUOTE](#)



 Bora Bora

## Maitai Polynesia

Let yourself be soothed by the serenity of nature in its purest form, the most beautiful sunsets, a perfect beach and a turquoise lagoon of dazzling beauty, rich in coral and tropical fish, rays, sharks and all manner of fascinating marine life.

The Maitai Polynesia Bora Bora is located in the heart of lush tropical gardens and close to Matira Beach, the only public beach on Bora Bora. Offering excellent accommodation at a great price, a friendly atmosphere and Polynesian welcome, two restaurants and two bars on site, souvenir shops and much more.

There are many fantastic places to sit, relax and enjoy the scenery around you with a delicious cocktail.

**Stay on land:** Garden View Room, Ocean View Room, Beach Bungalow

**Stay overwater:** Overwater Bungalow, End of Pontoon Overwater Bungalow, Premium Overwater Bungalow

**SPECIAL OFFERS** Early Bird, Combo and Stay/Pay Deals

**ACCESS:** 50 minute flight from Papeete to Bora Bora & 15 minute boat ride by free shuttle to Vaitape pier then 40 minute drive by the hotel minivan

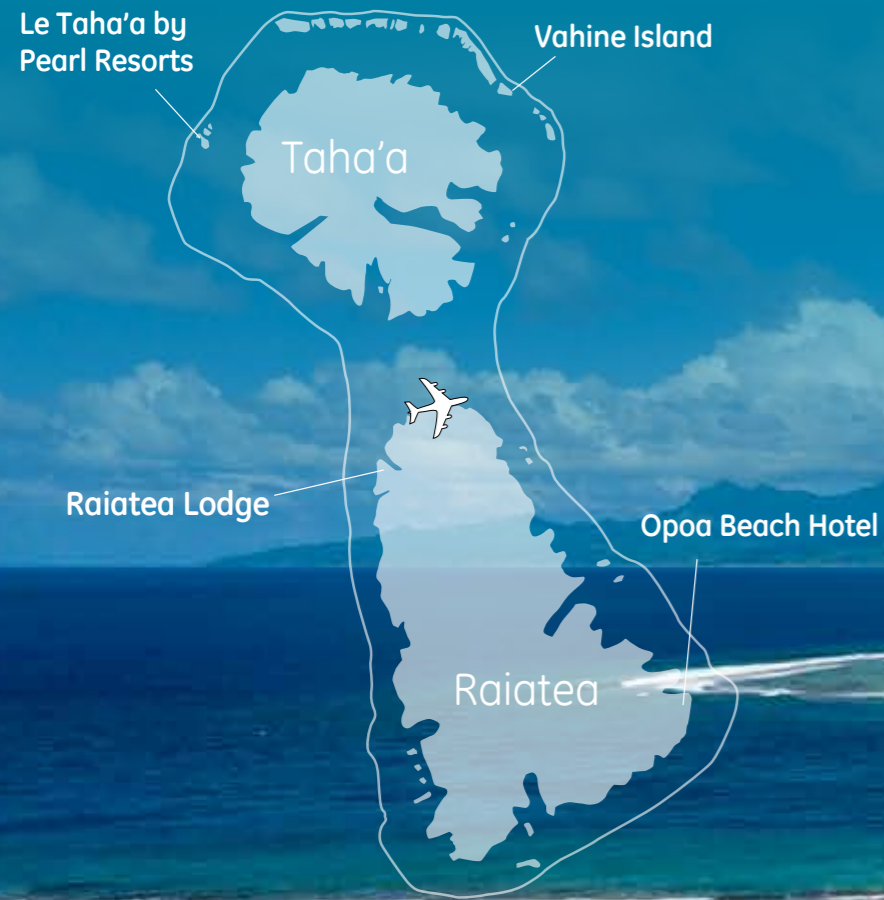
**From \$198 per person per night twin share**



[GET A QUOTE](#)



# Taha'a & Raiatea



The islands of Taha'a and Raiatea are encircled by the same reef and share the same immense lagoon. From the island of Tahiti, it is a 45-minute flight to the airport on Raiatea with connecting service to Taha'a on a 30-minute boat ride across the lagoon.

Raiatea, meaning "faraway heaven" and "sky with soft light," was first named Havai'i as is considered the homeland of the ancient Polynesians. Recognised as the most sacred island in the region, the green-carpeted mountains rise to the cloud-capped peak of the celebrated Mt. Temehani.

Raiatea & Taha'a highlights...



CANOE DOWN THE FAAROA RIVER



TAPUTAPUATEA MARAE, UNESCO WORLD HERITAGE SITE



HIKE MT. TEMEHANI PLATEAU



VISIT A VANILLA PLANTATION



RENOWNED FOR SAILING



VISIT A PEARL FARM



## Le Taha'a by Pearl Resorts

Member of the prestigious Relais & Châteaux association, Le Taha'a by Pearl Resorts welcomes you to a world of pristine beauty, a timeless universe of sophistication and authenticity.

Located on the secluded Motu Tautau, facing the island of Taha'a on one side and featuring the most perfect view of Bora Bora on the other side, the resort, inspired by Polynesian architecture and style, hosts stunning suites and villas. This very private destination is a perfect getaway for discerning travellers searching for an idyllic retreat.

Defined by Relais & Châteaux philosophy, Le Taha'a is the promise of a complete change of scenery, a way of life of its own, in harmony with its preserved environment, people and local culture.

Le Taha'a by Pearl Resorts offers 3 restaurants, 2 bars, a swimming pool and a fitness centre. Unwind with a massage or beauty treatment at the day spa, or just relax on the sun loungers.

Each villa and suite features a private bathroom, a sofa and a flat-screen TV with satellite channels. All feature an outdoor shower and a shaded area with outdoor seating.

The hotel is committed to sustainable development through Eco-responsible approaches.

**Activities:** Beach volleyball, bicycles, fitness centre, kayaks, library, petanque, paddle board, snorkelling equipment, tennis court

**Stay on land:**  
Pool Beach Villa, Royal Pool Beach Villa

**Stay over water:**  
Taha'a Overwater Suite, Sunset Overwater Suite, Bora Bora Overwater Suite, End of Pontoon Overwater Suite

**SPECIAL OFFERS**  
Early Bird Deals, Combo Deals

**ACCESS**  
45 minute flight from Papeete to Raiatea & 35 minute speedboat from Raiatea airport

**From \$898 per person per night twin share**

[GET A QUOTE](#)



## Vahine Island

Located in the paradise of Motu Tu Vahine, a small private 9-hectare island in the middle of Taha'a lagoon, hotel Vahine Island has everything to spend an unforgettable stay: white sand beach, beautiful coconut grove, snorkelling in the coral garden, view on the island of Taha'a and stunning sunset behind the neighbouring island of Bora Bora...

Enjoy the warm welcome, personalized service by the hotel team and gourmet cuisine enhancing quality products. Although located on a motu, the hotel is easily accessible and offers many activities. This is perfect for couples looking for tranquillity and privacy for a romantic getaway...

Since 2006, Vahine Island is a member of the prestigious hotels chain Small Luxury Hotels of the World.

The ultimate island fantasy, Vahine Island Resort and Spa is a remote Polynesian hideaway on its own private island with just nine beachfront and overwater bungalows hidden among coconut trees and facing a pristine blue lagoon. Promising warm, tropical seas, mouth-watering cuisine and carefree sun-filled days, this is truly paradise on earth.

**Activities:** Badminton, beach volley, fishing, kayaks, library, mini golf, petanque, paddle board, snorkelling equipment, volleyball

**Stay on land:**  
Beach Bungalow, Beach Suite, Villa Suite @ La Villa Royale, Royal Suite @ La villa Royale

**Stay over water:**  
Overwater Bungalow

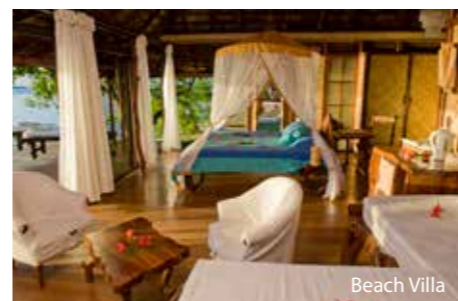
**ACCESS**  
45 minute flight from Papeete to Raiatea & 35 minute speedboat from Raiatea airport

**From \$412 per person per night**

[GET A QUOTE](#)



Overwater Bungalow



Beach Villa



## Raiatea Lodge



Completely renovated in 2020, the Raiatea Lodge Hotel is a small charming 3-star hotel, located on the west coast of the sacred island.

The hotel stands out by its colonial style and its vast tropical park of more than one hectare in which are nestled our seven bungalows just waiting to be uncovered. After passing through the coconut grove, you will arrive at the spacious mansion which houses the rooms upstairs; the suite, the bar and the restaurant on the ground floor. These different facilities offer a breathtaking view of the lodge's swimming pool and the surrounding tropical garden.

Only 5 minutes away from the airport and 10 minutes from downtown Uturoa and its famous covered market, the lodge boasts an ideal location. Situated not far from the Tapioi and Temehani mountains, it will appeal to hiking and botanical enthusiasts. Renowned, the restaurant offers a refined menu combining French cuisine & local products.

As everywhere in Raiatea, the hotel has no beach but offers easy access to motu Miri Miri (islet) and its white sand beach, just 15 minutes away by kayak.

Raiatea is located in the Leeward Islands archipelago, only 210 km northwest of Tahiti. Former cultural and religious centre of East Polynesia, it is now not to be

missed. True cradle of the Maohi culture, it remains the second economic pole of French Polynesia.

A noble wood, a refined style, the Raiatea Lodge Hotel blends in with the landscape but is certainly not lacking in character. Its warm atmosphere and sophisticated decoration make it a friendly place, perfect for relaxation.

Located on the first floor of the main building, the rooms overlook the lagoon or the lush garden while the bungalows are scattered along the sides of the tropical park.

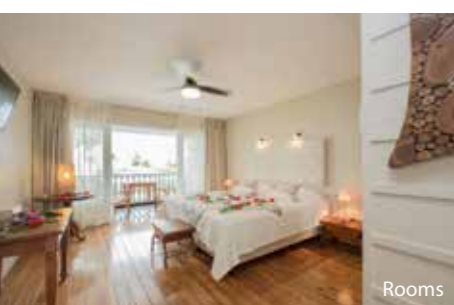
**Activities:** Bicycles, kayaks, library, snorkelling equipment

**Stay on land:** Standard Room, Lagoon View Room, Lagoon View Bungalow, Family Lagoon View Bungalow

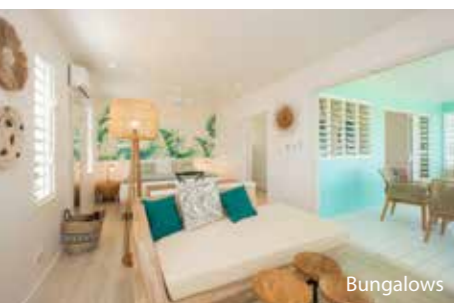
**ACCESS:** 45 minute flight from Papeete to Raiatea & 10 minute from Raiatea airport

**From \$168 per person per night**

GET A QUOTE



Rooms



Bungalows



## Opoa Beach Hotel



The experience begins upon arrival at the Raiatea airport with a warm welcome. You will discover the island along the way to the south coast before arriving at the Opoa Beach Hotel property.

Nestled in a basket of lush vegetation, the hotel is located on the edge of the lagoon, with a superb view of the lagoon, the Bird's Islet, the coral reef, and fabulous sunrises and moonrises over the island of Huahine.

Nine blue-roofed bungalows with white ceruse teak furniture await you. The interior decoration is based on local natural materials and is meticulous in every detail, bringing elegance to these spacious and bright units.

From the hotel's pontoon, you will have an unobstructed view to admire the magnificent sunrises and sunsets on the island of Huahine.

You will be seduced by the friendly atmosphere, the personalized service and the gourmet cuisine. For a totally different and unforgettable stay, don't miss this address!

**Stay on land:** Garden Bungalow, Beach Bungalow

**ACCESS:** 30 minute flight from Papeete & and coach/car transfer to hotel.

**From \$330 per person twin share per night**



Bungalows

GET A QUOTE

# Huahine



Huahine casts a spell over you from the moment you arrive. Only a 40-minute flight from the island of Tahiti, the enchanted Huahine, with its lush forests, untamed landscape, magnificent bays, white sand beaches and quaint villages, is one of the best kept secrets. Relatively unchanged by the modern world, Huahine offers the slower and tranquil pace of old Polynesia.

With only eight small villages scattered across the island, the few residents welcome visitors with great kindness.



## Huahine highlights...

### Stone Temple Mecca

The famous archaeological sites near the village of Maeva include the largest concentration of pre-European marae (stone temples) in Polynesia. There are more than 200 archaeological stone structures, which have survived for centuries. These structures lie within yards of one another along the shore of Lake Fauna Nui and overlooking the lake on the sacred and scenic Matairea Hill. These include marae of island chieftains, dwellings, horticultural developments, and religious and ceremonial monuments.

Travellers can follow a footpath through the rainforest to explore royal marae and immense fortification walls, as well as stone foundations for homes of island chiefs and priests. Other important historic finds have shown that Huahine has the oldest recorded date of human occupation among the Society Islands.

Discoveries at the recently uncovered sites date from A.D. 850 to 1200 and include workshops for the construction of canoes and assembly of fish hooks. This history comes to life in the stories local guides will share — ancient tales passed along generation to generation, and tales of daily life on this sacred island.

THE RUINS OF MARAE ANINI



GET A QUOTE

## Huahine

### Maitai Lapita Village

If you're searching for an unforgettable vacation in a place both authentic and mystical, Maitai Lapita Village welcomes you to the island of Huahine, known for preserving its places in their wild state.

The Maitai Lapita Village Huahine lies between a lake and the lagoon, on an ancient archaeological site where our Huahinean ancestors once lived, hence the name Lapita Village, referring to those people. This Huahine hotel offers excellent accommodation at a great price, welcoming hospitality, a restaurant and bar, a swimming pool, a multitude of activities and much more.

The Maitai Lapita Village Huahine is a dream destination for all divers, explorers, sea lovers and those who treasure vacations rich in emotions and discoveries. Your accommodation is traditional, immersed in the wilderness of the island, and affordable - making it the ideal place to stay while you discover the islands of French Polynesia.

**Stay on land:** Garden Bungalow, Premium Garden Bungalow, Premium Lake Bungalow  
**From \$240 per person per night twin share**



GET A QUOTE

## Huahine

### Le Mahana

You will love this charming and comfortable property located on the south-west coast of Huahine. The hotel enjoys an ideal location in Avea Bay along a nice white sand beach and in front of a coral garden full of small fishes. This is also the best location to enjoy beautiful sunsets...Service is friendly and smiling Polynesian staff is always elegantly dressed with colourful local dresses. This is the ideal place for families as well as couples on honeymoon, 4 nights or more would be perfect to fully enjoy this beachfront property.

Free access to hotel clients: kayaks, stand up paddle boards, fins, masks, snorkels, beach towels and chairs, free wi-fi.

You can rent cars, quads, scooters or bicycles, ½ day or full day, directly from our partner Europcar, which has an office in our reception.

**Stay on land:** Garden Bungalow, Deluxe Lagoon View Bungalow, Deluxe Beachfront Bungalow, Lagoon Front Bungalow

**From \$173 per person per night twin share**



### Pension

# Tetiaroa



Some places you feel. They cast their spell on you immediately. This is Tetiaroa. A haven for birds, sea turtles and all kinds of marine life, Tetiaroa is treasured among Tahitians who know it as a sacred place. So sacred, that at one time the coconut dotted white sand beaches and crystalline lagoon of this uninhabited atoll was an exclusive getaway for Tahitian royalty. It's not surprising that actor Marlon Brando fell under its spell during the filming of *Mutiny on the Bounty* in 1960, and later went on to become its owner. Now you can follow in the wake of kings and Hollywood royalty with a quick 15-minute private charter flight from Tahiti or Moorea.

Unique in all respects, The Brando resort raises the bar for service, luxury and pure escape to the highest possible level.



## Tetiaroa highlights...



UNIQUE FAUNA ON BIRD ISLAND



CORAL REEF ATOLLS



ARCHAEOLOGICAL SITES



## The Brando

### Marlon Brando's vision drove the future of Tetiaroa

Marlon first spied Tetiaroa on a hike in Tahiti while filming *Mutiny on the Bounty* in the early 1960s. It was here he found a place of indescribable beauty and Polynesian authenticity, that offered a quiet and secluded place to connect with others, with nature, and with himself.

Marlon was fascinated by renewable resources, organic farming practices, and alternative energy sources, long before it was in the zeitgeist. He was driven by a desire to create beautiful structures while causing the least impact on the environment.

Marlon's intent was always to honour and respect the land, the Tahitians that came before him, and the people who come after him.

### ACCOMMODATION

Every villa is a cocoon, a private space on Tetiaroa: Spread across the Onetahi motu and set back just off the beach are 35 private villas and one private residence, each a retreat within this sanctuary called Tetiaroa. There's a flow to these spaces, where doors fold open to create breezeways to the outdoors, and transitions between rooms are subtle, open to entirely different spaces to live in. Welcome home.

### Sustainably Built:

We designed and built our villas to use fewer resources, reduce waste, and minimize the impact on our environment. The Brando is the first resort in the world to achieve LEED (Leadership in Energy and Environmental Design) Platinum Certification.

### Privacy Redefined:

Every accommodation is a separate home, set apart from every other building. With your entire villa shrouded in foliage and multiple areas to sleep, relax, read, or just watch nature going by, this is privacy redefined.

### Quiet Stays:

Every villa is constructed using natural and modern materials, advanced insulation, and ventilation. When the windows are closed, you're shut off from the outside world in your own private cocoon. And all that quiet means some of the best sleeps ever.





Teremoana Residence



Two & Three bedroom Villa



Varua Te Ora Polynesian Spa



### SPA AND WELLNESS

Fare Manu is a giant nest in the treetops, a retreat within Varua Te Ora spa. Our “house of the bird” is a place for relaxation, meditation, contemplation, and treatment.

Our spa sits on the very land where Tahitian chiefs and royalty came for centuries to partake in beauty rituals. Now, as in the past, sarongs called pareu are worn as you traverse elevated walkways among lush tropical foliage to partake in modern treatments based on ancient rituals. On Tetiaroa, a massage is so much more than a simple body therapy. Your arrival at a secluded space is just the beginning of your journey through a holistic experience to find your own harmony with nature, the Polynesian culture, and people.



### CUISINE

#### Bob's Bar

Long before the Brando existed, there was Bob's Bar. It all started here, where Marlon would come at the end of each day and ask his friend Bob to create a cocktail for him. Our in-the-round homage to Marlon and Bob sits squarely on the beach and serves up South Pacific food and drink inspired by Marlon's films.

Put your feet in the sand, order Marlon's favourite cocktail—a Dirty Old Bob, then raise your glass, and give a toast to Tetiaroa



#### Nami Teppanyaki

An intimate table built for socializing at a Japanese grill. At Nami, it's just the eight of you and the chef centered around a teppanyaki grill. Sushi is expertly sliced and rolled, steak and shrimp are cooked to perfection in front of you, and sake pairings are the perfect complement to a multi-course meal. It's here around the grill where you chat about where you're from, share the adventures you've experienced while on Tetiaroa, and connect with other guests who quickly become new friends

#### Te Manu Bar

Sip cocktails while you float atop a canopy of palms. As you ascend a gently angled pathway skyward, you'll quickly find yourself in the middle of a cocktail lounge perched above the beach. Inside, sofas and comfy chairs create cozy areas for sharing stories of your adventures from the day. Bartenders ask for the ingredients you love, and create a cocktail just for you.

And outside, short walkways lead to private seating areas, jutting out into the air and hanging over the beach. With endless views of the lagoon, motus dotting the landscape in the distance, and the sun setting over the atoll, nature knows how to put on a show that will have you returning night after night.

#### Beachcomber Cafe

Simple, fresh dishes for everyone, all day long. Open all day for breakfast through dinner, Beachcomber is a casual, feet-in-the-sand kind of place for everyone. An extensive menu focusing on Polynesian flavors, simple dishes, and local ingredients offers something for everyone. Indoors or outside, in the sun or under cover, on solid ground or in the sand next to the beach, this is what you dream of when you think of dining at a resort, on an atoll, in the middle of the South Pacific.

#### Les Mutinés

A Polynesian fine dining experience with Jean's special touch. Les Mutinés is special and sophisticated, yet completely laid back—the way food is supposed to be enjoyed on Tetiaroa. There's a gentle flow to a dinner that moves subtly between dishes with ingredients sourced from local seas, ranches and farms. And with a perfectly paired splash of wine from top chateaus in France with every dish, this is our kind of fine dining.

**ACCESS:** 15 minute flight direct to the resort landing strip from Papeete.



Les Mutinés: Polynesian-inspired dishes, East/West fusion and French cuisine, designed by the Executive Chef Pierre Lecorne.



Beachcomber Café: Polynesian-inspired dishes alongside classic French cuisine.

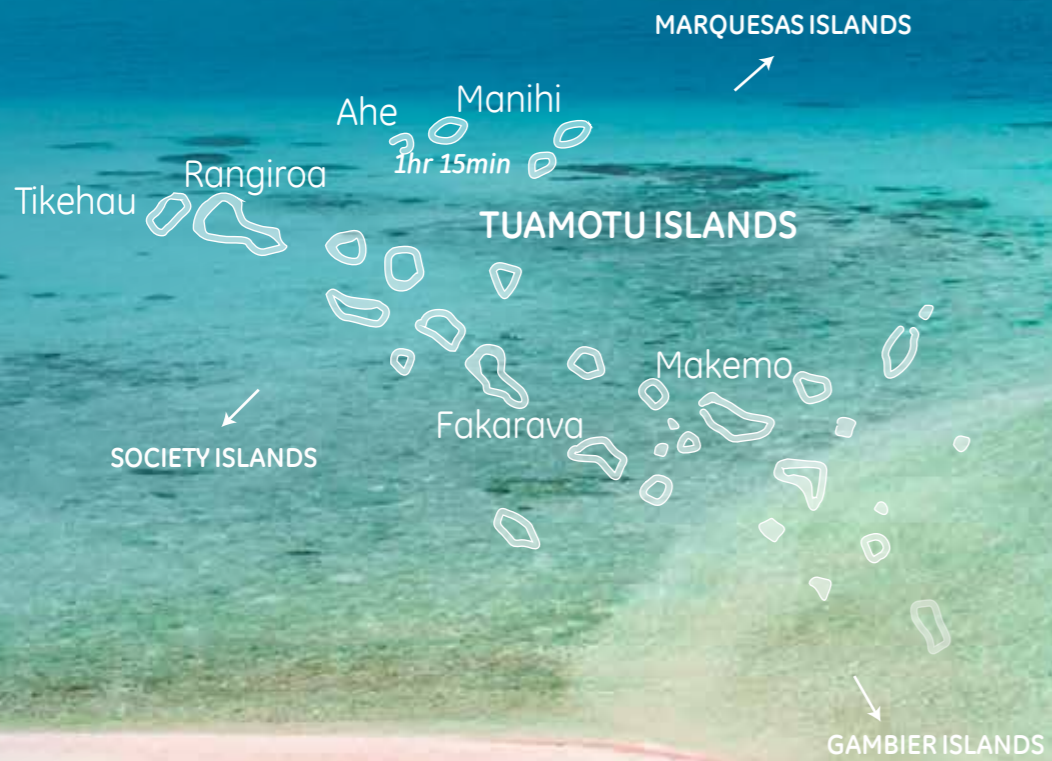


Bob's Bar: Named for Marlon Brando's factotum on film sets.



Nami Teppanyaki: Chef Nakamura takes you on a journey to Japan's most subtle flavors in the elegant and intimate setting.

# Tuamotu Islands

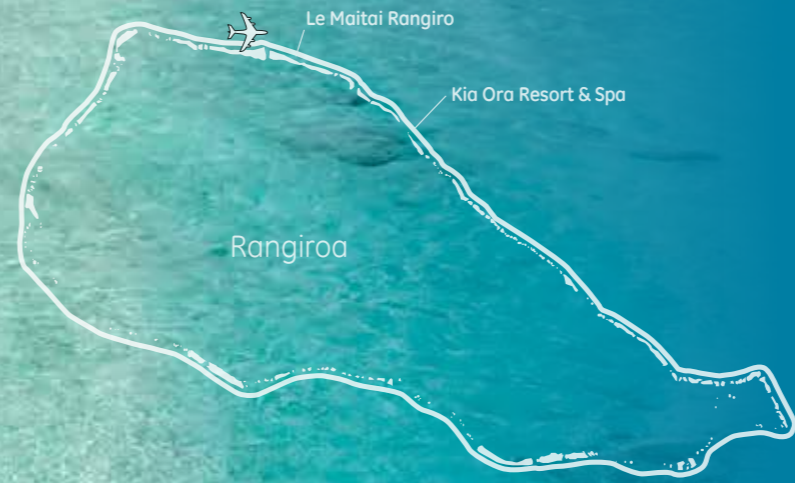


## TIKEHAU

Days evolve quietly on Tikehau. From the sky, this graceful atoll, a 55-minute flight from Papeete, looks like a crown of white and pink-sand beaches shimmering around a lagoon almost too breathtaking to be true. Only about 500 Paumotu call this tranquil world home, generations of fishermen whose lives revolve around the sea. Local families share fish parks (underwater fenced areas) where they trap lagoon species as a primary source of food and income.

The density of the fish in the lagoon caused Jacques Cousteau to declare it to contain the highest concentration of fish of any atoll in the Tuamotu.

Travelers can enjoy endless leisurely hours of snorkelling, diving, and kayaking and exploring the village of Tuherahera.



## RANGIROA

Surrounding one of the world's greatest dive destinations, 240 islets string together in the ocean for more than 177 kilometres completely encircling a deep lagoon. Rangiroa is the world's second largest atoll and is surrounded by different kinds of ocean, Moana-tea (Peaceful Ocean), which defines the lagoon, and Moana-uri (Wild Ocean), where whales, mantas, dolphins and sharks parade. On land, the main villages of Avatoru and Tiputa you'll encounter coral churches, craft centres, local restaurants and boulangerie, and tiny shops. Visitors can also enjoy wine tasting at the Dominique Auroy Estate nestled within a coconut grove, which produces three grape varieties, and Tahitian cultural pearls farms, which dot the lagoon.



## FAKARAVA

One hardly notices the small, lovely islets that form a ring around the lagoon of Fakarava, the second largest atoll in French Polynesia. The lagoon draws your attention, its beauty pulls at you like a magnet. Here the world seems unblemished. Life in the small villages, with their bougainvillea lined roads, bright coral churches, quaint homes, boulangerie, snacks and restaurants seems to hover above the clear waters that surround this UNESCO Biosphere Reserve.

Fakarava was once the ancient capital of the region and the site of the first Catholic mission in the atolls, which was built from coral in the 1870s.

## Islands of Tuamotu



TIKEHAU



RANGIROA



FAKARAVA





## Kia Ora Resort & Spa



Hotel Kia Ora Resort & Spa is located on the northwest part of the atoll of Rangiroa, between the passes of Tiputa and Avatoru. Nestled in the heart of a magnificent coconut plantation, bordered by a white sand beach and a turquoise lagoon, the hotel boasts an elegant and refined architecture in perfect harmony with its environment. Since its complete renovation in 2011, the Hotel Kia Ora Resort & Spa includes 60 villas and bungalows with exceptional style, scattered throughout the coconut grove, on the beach overlooking the lagoon. A spa with a rain shower and a fitness room completes the hotel facilities. On the waterfront, a restaurant and a bar on stilts surround a swimming pool with jacuzzi.

Rangiroa, a coral atoll situated in the Tuamotu archipelago in French Polynesia, is home to one of the most beautiful hotels of the South Pacific – the Hotel Kia Ora Resort & Spa.

Located on the north-eastern coast between the two passes of Avatoru and Tiputa and surrounded by a lagoon with crystal clear waters, the hotel has a long standing commitment to authenticity and exceptional Polynesian hospitality.

The beautiful and unspoilt nature of Rangiroa is conducive to all types of activities and excursions

where you can either explore the wonders of the tropical nature or just relax in the infinity pool facing the lagoon with its different shades blue.

At sunset, relax in Rangiroa's unique overwater bar – the Miki Miki Bar, and enjoy a refreshing tropical cocktail as the sun drops below the horizon.

You will enjoy your meals in the Te Rairoa Restaurant which are prepared for you by our chef who blends delicate flavours of traditional Polynesian cuisine with the specialties that have made the reputation of French gastronomy.

**Stay on land:** Beach Bungalow and Beach Duplex Bungalow with Whirlpool, Deluxe Beach Bungalow with Pool, Villa with Pool, Junior Suite with Pool

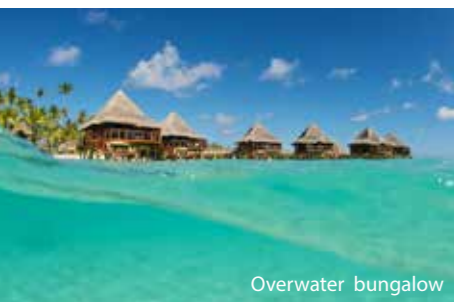
**Stay over water:** Overwater Bungalow

### ACCESS

1 hour flight from Papeete & speedboat to the hotel

**From \$347 per person per night twin share**

GET A QUOTE



Overwater bungalow



Beach villa with pool



## Le Maitai Rangiroa



Whether you are looking for an unforgettable vacation or an amazing scuba diving location, Maitai Rangiroa welcomes you to the island of Rangiroa, known worldwide for its exceptional marine life.

Let yourself be seduced by the beauty of this atoll, by its turquoise lagoon, its exceptional sunsets, and its stunning underwater seascapes. Don't miss diving in the passes of Tiputa and Avatoru, where you are likely to encounter dolphins, manta rays and all kinds of sharks. The Hotel Maitai Rangiroa is located on the lagoon between the passes of Avatoru and Tiputa. This hotel offers excellent French Polynesia accommodation at a great value, welcoming hospitality, great facilities, a multitude of activities and much more. The Maitai Hotel Rangiroa is a dream destination for all divers, sea lovers and those seeking a sensational vacation. You will find luxurious beachfront accommodation at an affordable price - perfect for discovering Rangiroa and the islands of French Polynesia.

### Stay on land:

Garden Bungalow, Premium Garden Bungalow, Lagoon Bungalow.

### ACCESS

1 hour flight from Papeete & speedboat to the hotel

**From \$233 per person per night twin share**



Premium Garden Bungalow

GET A QUOTE



 Tikehau

## Le Tikehau by Pearl Resorts

Le Tikehau by Pearl Resorts is the authentic Polynesian sanctuary you have been dreaming of, a confetti of simplicity on one of the most beautiful atolls in the Tuamotu Archipelago.

Relaxation and meditation, or discovery and activities: this lagoon at the end of the world is the blank page from which you can write the most beautiful journey.

In the unspoiled natural setting of a private coral islet, its 37 suites and bungalows make the Tikehau Pearl Beach Resort the only boutique hotel in the Tuamotu, combining intimacy and warmth.

Located on motu Tiano, a 15-minute boat ride from the village, Le Tikehau by Pearl Resorts reveals itself in the ocean's infinite shades of blue. Behind the pink sand beach, the wild coconut grove hides a beautiful tropical garden. You will feel transported right away in this world of exotism and serenity.

Tikehau is one of the most beautiful atolls of the Tuamotu archipelago. It is the coral-covered crown of an ancient, 65-million years submarine volcano.

Its white and pink sand islets, fringed with coconut trees, shape a 177 square-mile lagoon that opens onto the ocean through a single pass. It is famous for its wildlife-rich waters.

Tikehau has around 500 inhabitants, making a living from coprah, tourism and pearl farming. But fishing remains the main activity, and visitors can discover the world-famous fish traps, where catches are kept alive before being shipped to the market in Tahiti.

In the language of the Tuamotu, Tikehau means "peaceful landing," or "seeking peace." That is the exact feeling experienced by visitors, who come here looking for preserved nature, a life paced by the elements, and the simple joys of exchanging with the people who protect the atoll's beauty and keep its traditions alive.

**Stay on land:**  
Beach Bungalow, Pool Beach Villa

**Stay over water:**  
Overwater Bungalow, Premium Overwater Bungalow, Overwater Suite.

**ACCESS**  
1 hour flight from Papeete & speedboat to the hotel  
From \$410 per person per night twin share

[GET A QUOTE](#)



 Fakarava

## Havaiki Lodge

North of Fakarava, Havaiki Lodge and its friendly team of professionals welcome you to the edge of a translucent blue lagoon and a sparkling white sand beach. Put your suitcases in one of the 16 comfortable and beautifully decorated bungalows located Beach or Garden side. And let yourself be seduced by one of the many activities available at the pension: kayak or bike rides, snorkelling, massages, playground for children. Havaiki Lodge ... the perfect place for couples and small families alike.

10 bungalows on the edge of the lagoon and 5 bungalows in the heart of the garden to welcome you comfortably. Let yourself be seduced by our house cocktails, our refined cuisine, of local and European inspiration.

Located 15min from the airport by "local truck" and 5min from downtown Rotoava by bike.

**Stay on land:**  
Garden Bungalow, Garden Panoramic Bungalow, Beach Bungalow

**ACCESS**  
1 hour flight from Papeete & speedboat to the hotel  
From \$323 per person per night twin share

[GET A QUOTE](#)



# Marquesas Islands



A 3-hour 45-minute flight from Papeete, the Marquesas feel fierce and untamed, seemingly lost at the end of the earth. This world belongs to the past where the spirits of the ancient *ma'ohi* still live. The islands rise in sharp pinnacles almost in defiance of the Pacific Ocean. Even now, some of the islands remain virtually untouched since the era of European exploration. Known as *Henua Enana* ("Land of Men"), the isolation of the Marquesas has created a race of strong people of immense pride and a fascinating culture. The Marquesan language is unique to *The Islands of Tahiti*. The lilting dialect reflects the ancient Polynesian tongue of *ma'ohi*, the original island settlers. Natural wonders abound as 1,000-foot (305 meter) waterfalls cascade down volcanic cliffs, and towering mountains disappear into the clouds.

## Islands of Marquesas



HIVA OA



NUKU HIVA



CULTURAL EXPERIENCES



Hiva Oa

## Hiva Oa Hanakee Lodge

Known by many as "Paul Gauguin's Island," this majestic and historic island is known for wild and untamed landscapes, carved giant stone tiki, and unearthly vistas.

Suspended above Traitors' Bay with stunning views of Temetiu Mount, the Hiva Oa Hanakee Lodge, the only hotel of the island, welcomes you into its typical Marquesan atmosphere. From the interior decoration of its 12 bungalows through the kindness of its local staff to the majestic surrounding landscapes, it is an invitation to discover "the Land of Men". As the singer Jacques Brel or the painter Paul Gauguin once did, fall

under the spell of Hiva Oa.

Hanakee Lodge is 10min from Atuona airport by car 5min from main village Atuona by car. FREE daily shuttle to the village on the following hours only.

**Stay on land:** (compulsory 3 night minimum)  
Mountain Bungalow, Ocean Bungalow, Family Ocean Bungalow, Premium Ocean Bungalow

### ACCESS

3-3.5hr flight from Papeete and land transfer to hotel

3 nights from \$658 per person twin share

GET A QUOTE



Nuku Hiva

## Le Nuku Hiva by Pearl Resorts

The largest island in the Marquesas, Nuku Hiva boasts towering spire-like peaks, secluded, lush valleys, ancient sites, fjordlike bays, and waterfalls so high that most of the falling water evaporates as it descends.

Set on the hillside, in a lush tropical garden, Le Nuku Hiva by Pearl Resorts offers an unobstructed view of Taiohae Bay. The Lodge and its 20 spacious bungalows will be the ideal base from which to explore the island and its countless treasures. Each attentively decorated bungalow combines modern comfort and local materials, sculpted or embellished by Marquesan artists.

A pleasant walk will take you to a black, warm sand beach and the small town of Taiohae. At the end of the day, relax at the pool or the bar, then enjoy French *savoir-faire* at the Kenae restaurant are prepared to enhance the flavours of the Pacific.

Stay on land: Garden Bungalow, Bay View Bungalow, Premium Bay View Bungalow

### ACCESS

3-3.5hr flight from Papeete and land transfer to hotel

4 nights from \$1,999 per person twin share

GET A QUOTE





## TAHITI BY SEA

### Cruises, sailings, yacht charters and unique experiences on the world's most picturesque lagoons.

Several prestigious cruise companies visit The Islands of Tahiti with some of jewels of their fleets. With numerous ports of call in the islands, it is the perfect way to discover French Polynesia at a pleasant pace and in total luxury. Hop on a catamaran and stay afloat on the sea for a relaxing afternoon of sunbathing or visit nearby islands. Enjoy unobstructed views of the French Polynesia islands as you cruise and witness a beautiful sunset over the horizon.



## Paul Gauguin Cruises

### MS Paul Gauguin

The largest Tahitian based passenger vessel is the MS Paul Gauguin - a boutique 5-star cruise ship that carries up to 332 passengers across the French Polynesian archipelago. Being significantly smaller than many ocean traversing cruise ships, the size of this ship makes the experience more personal and entering our secluded lagoons possible.

When it comes to dreamy holiday destinations, Polynesia is nothing short of beguiling. The idyllic beaches and landscapes are not the only drawcard though - the iconic islands of Tahiti or Bora Bora in French Polynesia and their friendly neighbours (hello Fiji, the Cook Islands and Tonga!) are home to vibrant cultures and traditions, a uniquely relaxed way of life and incomparable hospitality. What better way to experience this close-to-home paradise than by



waking up to a new shoreline every morning? Elegant, intimate, small capacity Le Paul Gauguin could be the answer. An enchanting island escape This part of the world boasts majestic unspoilt landscapes, among the last natural paradises on Earth. From the islands of French Polynesia such as Tahiti, Moorea, Bora Bora and the Marquesas to idyllic neighbours that are the Cook Islands, Fiji and Tonga, these names fire your imagination just as much as their natural beauty. Think lagoons painted a thousand shades of blue, pristine coral reefs home to kaleidoscope schools of fish and unique marine life, friendly locals proudly sharing their cultures and traditions and tropical forest that make the perfect heavenly backdrop for relaxation. Reaching these islands on board Le Paul Gauguin fulfils all dreams of escape!



### RELAXATION MEETS LUXURY

With its small capacity of only 166 staterooms, Le Paul Gauguin offers the intimate sailing experience and premium service for a true relaxing break. The elegant, tasteful décor is in harmony with Polynesian culture, mixed with the conviviality and hospitality of your onboard hosts, the Gauguins and the Gauguines. For unforgettable onboard moments, delight in a unique blend of French cuisine and Polynesian flavours created by Michelin-starred chefs at one of the three onboard restaurants, relax with a drink and some live music at the piano bar, or enjoy an evening of traditional Polynesian performances by local artists and dancers.

### YOUR DAILY DOSE OF ADVENTURE

Whether on land or at sea, a voyage on board Le Paul Gauguin is your gateway for daily exploration and adventure. The ship's marina platform is the perfect starting point to explore Polynesia's sparkling lagoons: grab your snorkelling or scuba-diving equipment or even an underwater scooter and get up close with

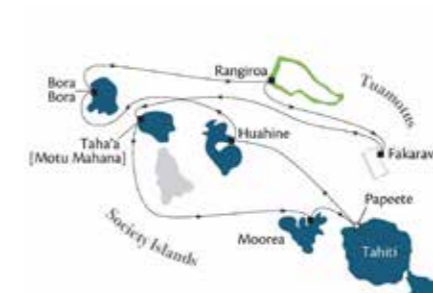
breath-taking coral gardens, or stay above the surface and opt for a kayaking excursion or some stand-up paddle boarding fun! The islands' volcanic terrain offers great opportunities for 4x4 or quad rides to reach hidden waterfalls, secluded rain forests and fascinating archaeological sites and various cultural discoveries.

### CAREFULLY CRAFTED VOYAGES

Multi-award winner Le Paul Gauguin has been navigating the seas of French Polynesia and the South Pacific Islands for over 20 years. Its shallow draught and small size allow access to the superb lagoons and secret coves of the visited islands and exclusive spots not accessible to larger vessels. As part of a program of carefully crafted itineraries, you can also enjoy an exclusive private beach experience in heavenly Bora Bora or one of Tahaa's secluded islets. Be treated to a beach gourmet Polynesian barbecue, explore the nearby untouched lagoons, or simply relax to the soothing tunes of the ukulele played by your hosts.



**Tahiti & The Society Islands**  
7 night/8-day | Tahiti > Tahiti from \$XXXpp



**Society Islands & Tuamotus**  
10 night/11-day | Tahiti > Tahiti from \$XXXpp



**Marquesas, Tuamotus & Society Is**  
14 night/13-day | Tahiti > Tahiti from \$XXXpp



MS Panorama II, Credit: Filip Kulisev



Wind Spirit and Star Breeze

## Variety Cruises

### MS Panorama II

Variety Cruises is one of the leading small ship cruise lines worldwide and owns and operates a fleet of 8 Small Ships, including upscale Mega Yachts and premium Motor Sailers, with capacities ranging from 34-72 passengers. Our philosophy is that our small boats provide for an authentic and intimate travel experience, focused in the destination and the local cultures, while experiencing a “boutique” cruise concept. Furthermore, our small ships reach destinations and ports no other ship can reach and a look at our programs will demonstrate this.

Our mission is to provide with life-enriching, authentic experiences at sea. Our Vision is to create a Better World at Sea.

The size of the boat and passenger capacity, our crew to guest ratio, our immersive experiences on shore and on board, and our 50+ experience in small ship cruising worldwide are some of the few highlights of this island-hopping adventure.

The 50-metre/164-ft M/S Panorama II features 25 cabins ocean-view cabins spread across three decks and four categories. The M/S Panorama II is the perfect small ship to explore these idyllic islands, easily accessing the islands crystal clear lagoons through passes and taking just 40 passengers average to shore via zodiac landings. Our programs feature as always optional excursions in most islands visited, many of which will allow to discover the Historical and Cultural heritage of French Polynesia and its unique underwater life and treasures, sometimes straight from our swimming platform. At last, both programs can be easily combined with pre or post land programs in French Polynesia. Tahiti, Moorea or Bora Bora.



### Tahiti & the Pearls of French Polynesia

7 night/8-day | Tahiti > Tahiti from \$XXXpp

Visiting all but one Society Islands including Bora Bora, Huahine and Moorea to name a few.



### Tahiti, the Society & Tuamotu Islands

10 night/11-day | Tahiti > Tahiti from \$XXXpp

This program explores the islands included in the 7-night program before crossing over to the lesser known but even more exotic and magnificent Tuamotu Archipelago islands including Tikehau, Makatea, Tetiaroa and world famous Rangiroa.



## Wind Star Cruises

### Wind Spirit (2023) and Star Breeze (2024)

Windstar has been sailing in Tahiti for over 35 years, so no other cruise line knows the islands like we do. We know that a graceful yacht is the perfect way to experience the true wonders of Tahiti year-round, and Windstar has two yachts for you to choose from to fit your travel style.

Our 148-guest Wind Spirit features wide teak decks and billowing white sails that are tailor-made for cruising Tahiti's islands, while our newly transformed 312-guest Star Breeze features all ocean view spacious 277 square feet suites, all new bathrooms in all suites, two new restaurants, the new World Spa by Windstar, a new infinity pool, new engines and so much more. Both yachts are as at-home among Tahiti's deserted motus and shallow lagoons as a tiare flower, and just as beautiful. Bliss knows no bounds. The sand massages your feet, warm water welcomes you like an old friend; ambition falls away as you watch the sun etch palm fronds on the beach.

All staterooms have ocean views, queen beds, and flat-screen TV with DVD player. The Owner's Suite includes a sitting area.

Wind Spirit offers two primary dining venues. Amphora restaurant offers gourmet, course-by-course cuisine in the evenings and Veranda restaurant offers casual buffet and full-service dining for breakfast and lunch. All dining is open seating. And, for dining under the stars, make a reservation for Candles which features steaks and skewers.

Wind Spirit amenities: World Spa by Windstar, Water sports Platform, Lounge, Library, Pool, and Hot Tub.

Star Breeze This all-suite yacht completed renovation as part of the \$250 Million Star Plus Initiative to provide more of what our guests love. New public areas, including two new dining venues, a new spa, infinity pool, and fitness area. The yacht also boasts all new bathrooms in every suite and a new category of Star suites, featuring a new layout. With ocean views and at least 277 square feet of comfort it carries only 312 guests.



### Dreams of Tahiti

7 days on Wind Spirit | Tahiti > Tahiti from \$XXXpp



### Tahiti & the Tuamotu Islands

10 days on Star Breeze | Tahiti > Tahiti from \$XXXpp



## Dream Yacht Charter

### Sailing the Islands of Tahiti

Part of the Society Islands, Tahiti is bursting with exciting marine life, emerald volcanic peaks and vivid exotic flowers, making it the perfect destination for a yacht charter.

This area boasts some of the most spectacular landscapes in the world, all of which you can explore on your Tahiti yacht charter – from green-topped mountains and perfect white sand beaches to calm aquamarine seas and protected turquoise lagoons.

Cooled by the trade winds of the Pacific, Tahiti enjoys a pleasant, sunny climate which, along with volcanic landscape and warm tropical waters, has created a diverse ecosystem of interesting plants and animals.

Begin your Tahiti sailing vacation on the island of Raiatea to explore its archaeological remains and impressive lagoon, then head to Motu To'opua under the familiar peaks of Bora Bora. It's the perfect spot for swimming and snorkeling.

Take a trip to Huahine while sailing Tahiti's islands and visit the small village of Fare, where you will find a warm Polynesian welcome. Browse the boutiques and get a bite to eat in the small restaurants.

Whatever itinerary you choose, a Tahiti sailing vacation is unmatched for sheer beauty, sunny skies, wonderful beaches and friendly smiles.

#### AVAILABLE CHARTER TYPES:

**Bareboat:** For experienced sailors, a bareboat charter is the perfect getaway. All you need is sailing experience, an adventurous spirit, and the yearn for that live-aboard lifestyle. Bareboating provides the utmost in freedom and privacy – do whatever you want, whenever you want! Hire a boat from our bareboat yacht charter fleet. Explore azure lagoons, island-hop archipelagos, experience bucket list sailing grounds and create memories with family and friends on a bareboat sailing vacation that will last a lifetime. We have more than 50 destinations to choose from.

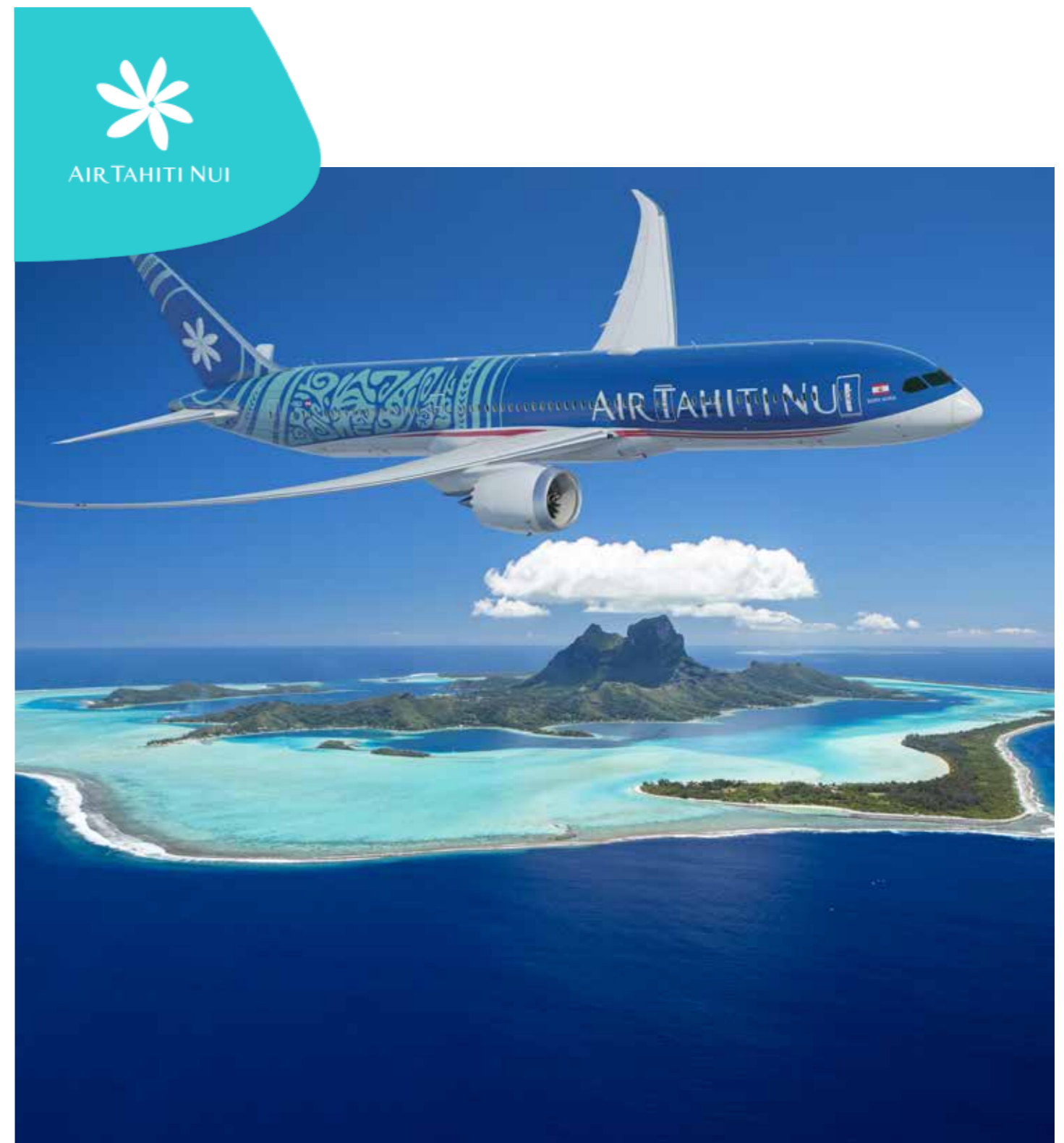
**Skippeder:** Relax and leave all the sailing to a professional skipper. You do not need to be able to sail to hire a yacht and it can also be affordable. If you can't sail we can find you a professional skipper to do the sailing for you, leaving you and your guests to enjoy a relaxing, hassle-free vacation.

**Fully Crewed:** Your own private yacht for an all-inclusive luxury sailing vacation. For an exceptional vacation of a lifetime, step aboard your own private yacht on a fully-crewed, all-inclusive charter that's the ultimate in luxury, complete with a customized itinerary and menu.

**Cabin Cruise:** Reserve a private ensuite stateroom on one of our modern catamarans and with a professional crew to do all the sailing and cooking, all you have to do is relax.



## Paradise Discovered preferred airline



We at Air Tahiti Nui believe each of us serves as an ambassador of our homeland.

As we chart our course of the next 20 years, the idea of Nui will be a shining star that guides us forward. We will challenge ourselves to examine every part of the travel experience we provide our guests to find ways to make it more relaxing, more immersive, and more "Nui."

# Booking Terms and Conditions

## QUOTATIONS

To obtain a quotation for any of the products featured in the PARADISE DISCOVERED (herein after PD) website or in PD supplied brochures please contact PD directly or your travel agent.

Prices in PD quotations may vary from those indicated in brochures and websites which latter were correct at the time of printing/loading (March 2019) but which can vary over time with inflation and exchange rate fluctuations and all prices and availability are subject to written confirmation at the time of booking.

All special offers are seasonal and may carry specific booking terms and conditions and are subject to availability at all times. Not all special offers can be combined and all special offers can be withdrawn without notice by PD's service providers.

All prices quoted which have foreign currency component(s) and airfares and taxes are current at the time PD prepares its quotations but remain subject to increases in line with changes in foreign currency exchange rates and variations in air fares and taxes up to the time of receipt by PD of the final payment but no increase will apply after the final payment has been received.

Except where specifically stated otherwise in PD's and PD's service providers quotations prices quoted do not include meals, airport transfers and sightseeing tours and exclude personal expenditure such as laundry, telephone calls, emergency evacuation costs, drinks, excess baggage, Government airport and airline fees and charges, passport and visa fees and charges, gratuities, insurances also all travel costs in Australia to the point of international departure.

PD makes no representations as to the safety or other conditions or issues that may exist at any destination. International travel advice can be obtained from various sources, including local government, local consular offices and the Australian department of Foreign Affairs or from the website "www.smarttraveller.gov.au"

## BOOKING TERMS & CONDITIONS

### 1 Acceptance of PD Booking Terms & Conditions

On making any booking by acceptance of any PD quotation and payment of the required deposit the company or person(s) making the booking become PD client(s) and understand and accept that any booking made becomes subject to the PD terms and conditions as set out herein

### 2 PD as Agent only

In making any booking clients accept and understand that PD acts as agent only for all service providers such as but not limited to tour operators, hotels, guest lodges, airlines, railways and other transportation companies or car hire operators etc etc.

When accepting any booking PD undertakes in good faith to make reservations with the service providers nominated in its accepted quotations and brochures and websites related to the booking made but, subject to any limitation at law, PD does not accept responsibility for injury, inconvenience, loss, damages, delay to persons or property, or for related expenses or inconvenience as a result of action(s) or lack of action(s) on the part of its employees, agents, service providers.

Furthermore, and again subject to any limitation at law, PD does not accept responsibility for any loss, damage, delay, injury, inconvenience, or for any related expense for any omission, error or any misleading statement or information contained any brochure or other documentation supplied and is not liable for any dissatisfaction the client may have with the services provided.

All receipts, itineraries and vouchers are issued subject to these terms and conditions and those specified by the service providers and it is important that prior to departure from Australia, clients read the booking terms and conditions set herein and in the travel documentation provided by PD and/or PD service providers. Subject to any limitation at law PD is not liable for any client losses or additional expenses caused or occasioned by delay, change of aircraft service, alteration to any other travel service, illness, injury, strike, civil disturbance, terrorism, quarantine, flood or other disturbances of whatsoever nature, which interferes, alters or adds to the cost of the services booked.

No employee of PD can change for the client any of these terms and conditions and those which any PD service supplier(s) agrees to undertake any service booked with PD.

### 3 Pricing & Payment

All prices are correct at the time of printing and based on low season, costs will vary due to seasonal surcharges and currency fluctuations. Lodges, camps and safari operators throughout Africa do offer seasonal specials. Please use this brochure as a tool to help you plan your holiday, for the most current and up to date specials please call our office and one of our specialist consultants will ensure you receive the best value for money.

All prices for any deposited booking which includes components based on foreign currency and/or includes airfares and taxes remains subject to increases in line with foreign currency exchange rate variations and changes in air fares and taxes up to the time of receipt by PD of the total price of the booking (final payment) but no increase will apply once the final payment has been received by PD. Details of the cost of services booked will appear in the PD booking confirmation/invoice.

Except where specifically stated otherwise in PD's and PD's service providers booking related travel documentation then bookings do not include meals, airport transfers and sightseeing tours and exclude personal expenditure such as laundry, telephone calls, emergency evacuation costs, drinks, excess baggage, Government airport and airline fees and charges, passport and visa fees and charges, gratuities, insurances also all travel costs in Australia to the point of international departure. Payment can be made by electronic funds transfer (EFT), credit cards, money order/bank cheque or Ennet.

Payment by EFT to be to the account name "PD Trust Account" at the National Australia Bank (NAB) with BSB 082-167 and Account No. 89-628-8069.

Payment by credit cards attracts surcharges (Visa/Mastercard 1.5%, AMEX 2%).

Personal and company cheques must be cleared by PD bank before documents are released

### 4 Deposits & Balance of Payments and Payment deadlines

A non refundable deposit of at least 25% of the total booking value (see also below) is required for all bookings payable within 7 days of receipt of PD booking confirmation /invoice with the balance of payment (final payment) due at the time stipulated.

For bookings made less than 60 days prior to departure the deposit and balance of payment is required within 7 days of confirmation of the clients acceptance of PD's quotation and issue by PD of its invoice for the amount(s) due.

For bookings made within 14 days of departure the deposit and balance of payment is required within 24 hours and a credit card guarantee will be required at time of booking.

Bookings incorporating special offers for air fares and other services may require full payment within 72 hours or less of confirmation and certain service suppliers may periodically impose separate stricter deposit and booking conditions which PD's consultants will advise at the time of booking.

If for any reason deposits and or balance of payments are not received by PD by the due date(s) PD Holidays reserves the right not to make corresponding deposits/ balance of payments as may be required by service providers to secure clients reservations.

It is the clients responsibility to pay deposits and balance of payments within the time periods stipulated in PD's invoice(s) and PD accepts no responsibility for cancellations made by service providers such as but not limited to tour operators, hotels, guest lodges, airlines, railways and other transportation companies or car hire operators if reservations are cancelled because of failure to pay deposits and/or balance of payments on time.

### 5 Booking documentation and amendments before and after departure

PD's booking documentation is normally forwarded to clients 3 weeks prior to the booking commencement date and if clients depart Australia prior to this date it may be necessary to courier documents at client's expense to an overseas address.

After a booking is first confirmed PD allows one subsequent booking amendment free of amendment fee charge but additional amendments may each incur an amendment fee of \$75 (inclusive of GST) and all amendments are subject to any additional charges levied by the relevant service provider(s). If PD are unable to amend any booking to the clients requirements due to circumstances beyond PD control and a booking cancellation is desired then cancellation charges will apply.

PD is unable to assist in changing client arrangements after departure from Australia and should changes be desired whilst overseas contact should be made with the relevant service provider listed on the PD voucher. Clients must be aware that the relevant service provider may levy an amendment

fee for any change of arrangements and that no refund is available on return to Australia if clients cancel or amend travel arrangements whilst overseas furthermore PD service providers are not authorised to confirm refunds directly to PD clients.

### 6 Cancellation provisions

#### Client cancellations

After receipt of full payment client cancellation charges are as set out below notwithstanding that service suppliers to PD may indicate different terms for those who book with them directly.

- For cancellations made at less than 60 days but more than 30 days prior to departure 50% of the total booking value or such higher percentage as required by the service supplier.
- For cancellations made less than 30 days but more than 15 days prior to departure the cancellation charge is 75% of the total booking value or such higher percentage as required by the service supplier.
- For cancellations made less than 15 days prior to departure the cancellation charge is 100 % of the total booking value.

#### Service provider cancellations

PD and all service providers reserve the right to cancel any booked client service before departure if the minimum number of participants required to operate the service is not reached or for any other reason deemed necessary or beyond PD's or the relevant service provider's control.

In the event of any such cancellation occurring, alternative services will be offered but if an alternative service acceptable to the client is not available a full refunded will be provided.

### 7 Unused & extra services

No refund will be considered for non-acceptance of pre-booked services once a booking has commenced irrespective of the reason.

Where passengers are unable to access any of the services booked due to invalid or mislaid mandatory travel documents (see below), ill health or for any other reason, the unused portion of the booked services are non-refundable.

PD will not accept responsibility or make payments for extra services desired by clients after issue of travel documentation ie for any service not stated as included and prepaid on the PD vouchers.

PD accept no responsibility for costs incurred by clients due to delays and or cancellations by service providers that require clients to make alternative and or additional arrangements not provided by the relevant service provider. It is the clients responsibility to settle these costs as and when they occur direct with the service provider engaged to provide the alternative and or additional requirements.

### 8 Passports, Visas and other mandatory travel documentation

It is the Clients responsibility to ensure that they are in possession of all valid mandatory travel documentation for countries that will be visited, (including transit stops) prior to departure from Australia. Failure to travel with correct documentation will result in denied boarding and entry. PD accepts no responsibility in the event of the clients failure to obtain required travel documents.

Australian citizens require a current passport, which must be valid for the required period (historically 6 months) after return to Australia.

Australian nationals may require visas for Zimbabwe, Tanzania, Uganda, Rwanda, Kenya, The Democratic Republic of Congo, Zambia Botswana and Madagascar and other destinations and it is the clients responsibility to obtain all required visas before departure.

Non Australian passport holders should check directly with their consulates for visa requirements and must also ensure that they have the correct re-entry documentation for return to Australia and failure to do so can result in the need to cancel travel arrangements and incur cancellation charges.

It is absolutely essential that the names of passengers provided to PD are exactly as they appear in the passenger's passport. Name changes are considered as a cancellation by airlines and require seats to be re-booked and tickets re-issued which may result in loss of confirmed seating and can incur the client in additional charges.

### 9 Medical

Clients are responsible for obtaining appropriate advice from their medical practitioner as to current vaccination requirements.

### 10 Travel Insurance

Cancellation and refund conditions are strictly enforced so PD strongly recommend clients take out comprehensive travel insurance at the date of booking which covers cancellation and delays due to unforeseen circumstances. Clients are strongly recommended to arrange such cover with their travel agent or their PD consultant.

PD advise clients to ensure that all pre-existing health conditions and all other relevant matters are declared when applying for insurance.

If travel insurance offered by other providers such as credit card companies is used it is recommended careful consideration be given to ensuring that such insurance cover is adequate.

### 11 Brochure and Website accuracy

Rooms, facilities and scenes appearing in the PD and service providers brochures and websites represent those rooms, facilities and features associated with the hotels, tours and other services offered at the time of compilation of the brochure(s) or website(s).

Photographs and descriptions are accurate at the time of printing/loading and every effort is made to ensure the brochures and website illustrations are as accurate as possible but PD cannot guarantee that these necessarily depict the rooms, facilities, features or seasonal scenes current at the time the booked service is provided.

### 12 Privacy

In order for PD to process any booking clients agree that PD may use any personal information provided by them to PD such as but not limited to names, gender, age, postal and e-mail addresses, passport details, disabilities, dietary/religious requirements /persuasion etc etc.

Such information may also be provided by PD to security or credit checking companies, and public authorities such as customs and immigration if required by them or by law. On occasion PD may also use contact details provided to distribute brochures or other travel related material.

PD undertakes not pass on such client information to any person or organisation not involved in service supply relevant to any booking made.

### 13 Complaints

Any complaints while travelling should be made immediately to the relevant service provider's representative or relevant local authorities.

Clients should allow the service supplier the opportunity to directly resolve any complaint at the time it arises but if any complaint remains unresolved, to obtain PD's support, clients must lodge a written detailed complaint with the service supplier within 14 days of the date of returning to Australia on completion of any booking.

Any complaints that remain unresolved after completion of this procedure must be conveyed to PD in writing within 28 days of the first date of communication with the service supplier together with all supporting documents and PD will then endeavour to assist in resolving the matters complained about but cannot guarantee the client a successful outcome.

PD will not involve itself in any complaint where the client does not observe the time limits set out above or provide sufficient evidentiary detail to justify the complaint.

Images: Brochure Design Janette Dose 0404 496 530. Images special credit to Wilderness Safaris Photographers Moments, Great Plains Conservation, Wild Horizons, &Beyond, Time + Tide.



## Keep up-to-date on the latest offers...

### SUBSCRIBE

Get current news and events the easy way! Select the newsletters you would like to receive by subscribing to regular email updates.

### HOT DEALS



### BROCHURES



Save a Tree! View all our brochures and tours online.

### FOLLOW US

Like our Facebook page and follow our instagram page to receive news and updates.



Download flyers with the latest special offers.

## www.paradisediscovered.com.au

### Reservations: 1300 650 481

The Impulse Travel Group Pty Ltd  
ABN 92 100 392 345, ATAS Accreditation A10473 trading as Paradise Discovered  
10/541 Church Street North Parramatta NSW  
email: sales@paradisediscovered.com.au

